



Date: 9<sup>th</sup> April 2015 (Thursday)

MS –GOLD – POM - MARKET STRATEGY REPORT (SP)

By : Suneil R. Pavse, E : apavse@aol.com

## ● Executive Summary

	Current Price	POM Triggered within CZ & Date	Follow up <u>Announcement</u> Update For Trend Reversal	Progress Status	Current Position / Exposure	<u>NEW ACTION</u> (Trigger to Watch))	Upside CZ Near Term	Upside CZ Mid term	Downside CZ Near term	Downside CZ Mid term	Remark
<b>GOLD</b>	1195	POM 12 On 3/19 @ 1165 <b>ENTRY</b>	NONE Stop @ 1140	<b>BULLISH</b> St pull back	15% Net long	<b>Raise stop to 1165</b>	1 <sup>st</sup> PEC-D 1210 <b>Met Bullishly Twice</b>	Target PEC-D 1280 Bullish Top	<b>pull back to 1185 &amp; rally</b>	ABC down to 1140 <b>completed</b> Bullish Bottom	Earlier Trade Stopped out at close @ 1185 cost

**Note** - Announced entry on 3/19 Report @ 1165 as POM 12

	Current Price	POM Triggered within CZ & Date	Follow up <u>Announcement</u> Update For Trend Reversal	Progress Status	Current Position / Exposure	<u>NEW ACTION</u> (Trigger to Watch))	Upside CZ Near Term	Upside CZ Mid term	Downside CZ Near term	Downside CZ Mid term	Remark
GDX (XAU /HUI MINERS COR)	18.90	POM 12 On 3/19 @ 18.07 ENTRY	NONE Stop @ 17.0	BULLISH St pull back	15% Net long	NONE	1 <sup>st</sup> – PEC-D 20.5	Target to PEC-D 24 Bullish Top	pull back to 18.90 & rally	ABC down to PEC-D -18 completed Bullish bottom	Earlier Trade Stopped out at close @ 18.5 cost

## GOLD – Overview -

The Gold's bottom was put in on our announcement **date 3/13 for POM 12 trigger @ 1165.**

Gold hit the key level of 1210 on upside meeting our 1<sup>st</sup> ABC up for second time but **DID NOT** close **above the highs of 1220** it could put them in a strongly positive bias to the upside to target 1280. The pullback in GOLD should be shallow and rally up. In coming weeks GOLD should be moving much higher.

The rally has begun with Sign of strength and expanding volume. It has rejected long term **CZ 1165-1140** with light volume and made key reversal. On upside, the **ABC up to 1210** and then to **PEC-D 1280.**

DXY has come off the top with high volume and has finished 1 to 2 ABC up. Now the decline should be to 94. On upside the larger trend is complete.

GDX rejected their CZ lows with lighter volume and moved up with sign of strength. GDX/ GLD Ration are still diverging bullishy. On upside, the **ABC to 21.0** and then to **PEC-D 24.**

# DXY – Price path Analysis **Daily chart**

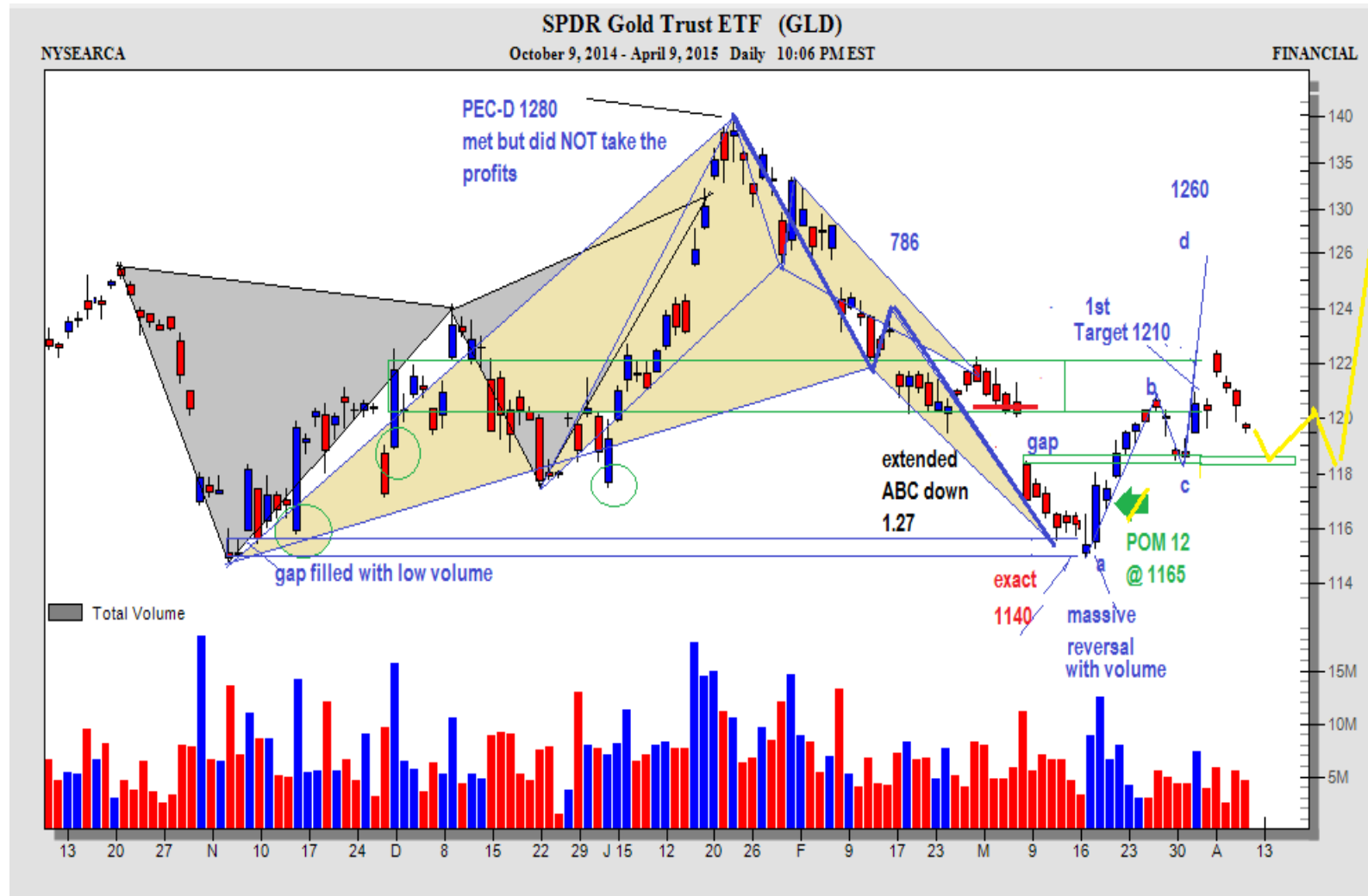


# GOLD- CZ/ PEC- D Analysis **Daily chart**

## Notes within chart

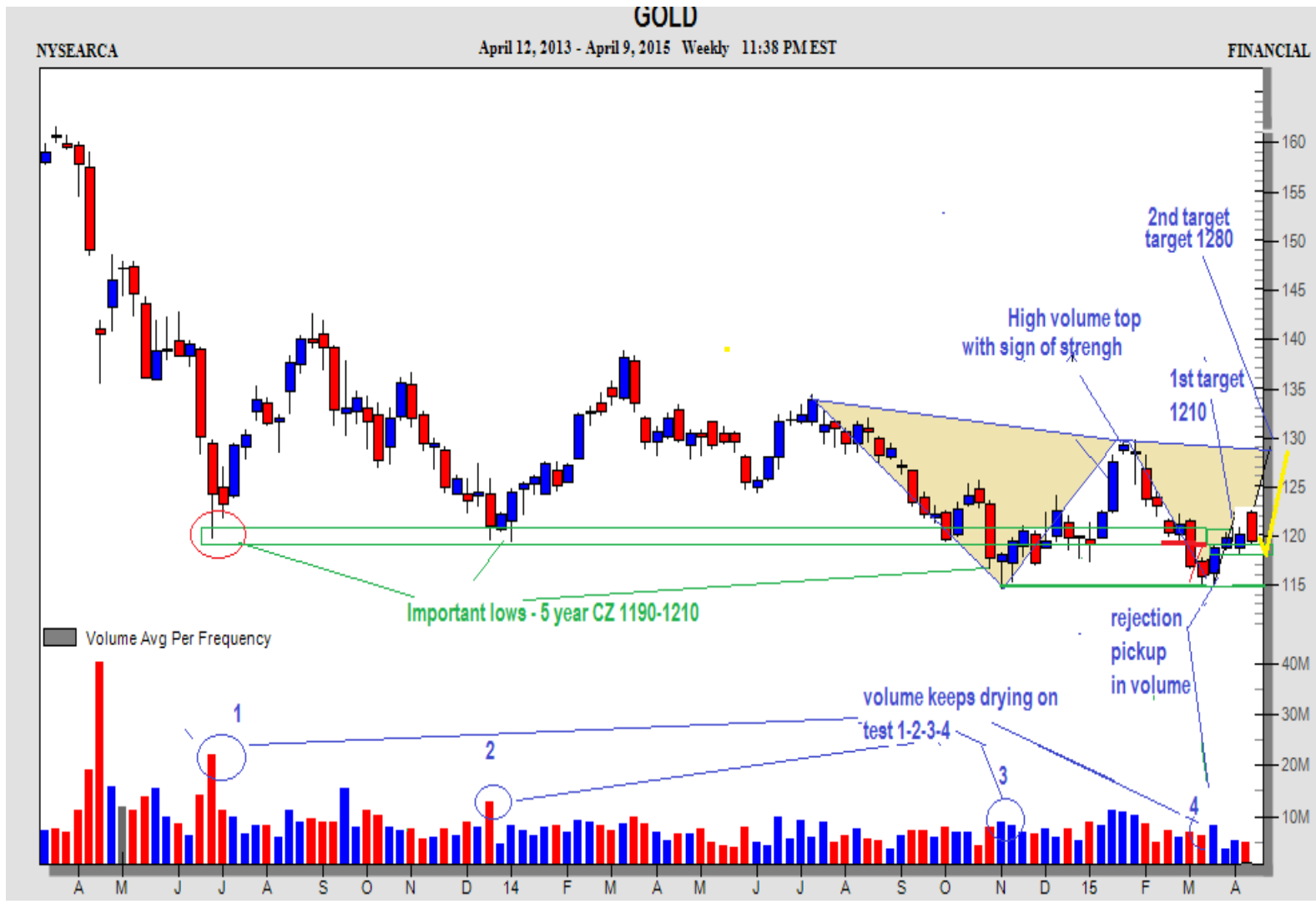
**Downside** - Shallow pull back to **1185** & rally up , **ABC down to 1140 & rejected** as volume is dried up on test.

**UPSIDE** - 1<sup>ST</sup> **PEC-D -1210** - met twice once bullishly and ABC up to **1280** Bullish Top.



# GOLD – Weekly – PEC –D / CZ Analysis

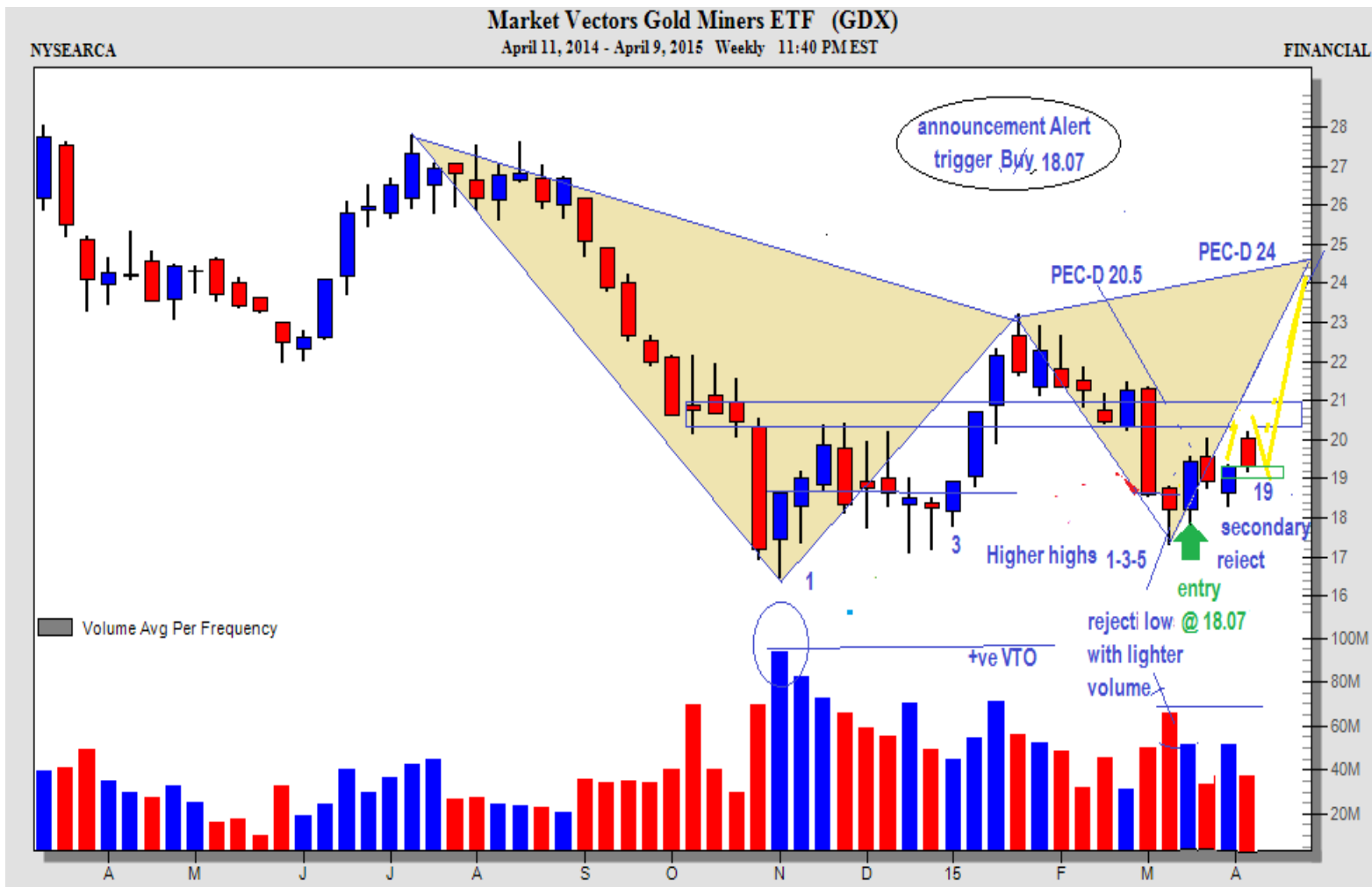
## Notes within chart



# GDX – Weekly – PEC –D / CZ Analysis

**Downside -** Shallow pull back to 19 & rally up, ABC down to 18 & rejected as volume is dried up on test.

**Upside -** Target PEC-20.5. ABC up to 24 Bullish Top. It should be re tested on upside **Wave 1-3-5**



# Appendix Content

- **2012 YTD – SPX - Position Summary**
- **Objectives & POM /CZ / PEC –D Guidelines – Refer to detail Annexure**
- **Full Utilization of “ SP” Report Guidelines & Limitations - Refer to detail Annexure**
- **POM – “ Price Oscillation Model “ Criteria**
- **PEC –D “ Pythagoras – Expansion & Contraction Criteria**
- **CZ- Confluence Zone Criteria**
- **TEXTURES – Bullish , Bearish , Neutral**

## Critical backdrop Notes –

- *Price path Analysis is running commentary of the Market’s price behavior , Not a Trade Signal.*
- *Intermittent CZ’s are Short time out / Risk management for overweight position / rebalancing spots. Unless your own Portfolio objective demands.*
- *POM’s are Action points. Also at times Action points is at Main CZ’s when specifically announced Triggers.*
- *Model does not encourage Buying in between unless its false break upside or false break downside soon after POM / Main CZ Trigger and is specifically announced . Model stays with Trend POM to POM Signal.*



## (42) - INSTRUEMNTS COVERAGE SUMMARY

Re - STRATEGY & PROP ANALYSIS with – POM, CZ, PEC-D, PQV

GR 1 (13+2) Coverage in MS	GR 2 ( 9 +4 ) Coverage in SECTORS	GR 3 (8+1) Coverage in COMMODITY	GR 4 (5) Coverage in CURRENCY
<p><a href="#">US BROADER IDX</a></p> <ul style="list-style-type: none"> <li>• SPY ( SPX 500)</li> <li>• DIA ( DOW 30)</li> <li>• QQQ ( NASD100)</li> <li>• IWM (Small Cap)</li> <li>• IYT ( Transports)</li> <li>• NYA (NYSE)</li> </ul> <p><a href="#">BOND IDX</a></p> <ul style="list-style-type: none"> <li>• TLT ( Bonds)</li> <li>• MUB ( Muni). (SP)</li> </ul> <p><a href="#">GLOBAL IDX</a></p> <ul style="list-style-type: none"> <li>• EEM (Emerg.)</li> <li>• NIKK (Japan)</li> <li>• SSEC (China)</li> <li>• EWZ ( Brazil)</li> <li>• FTSE (Europe Proxy)</li> <li>• BSE (India)</li> <li>• EWA (Aust) SP</li> </ul> <p>SP - Special situation</p>	<p><a href="#">SECTORS IDX</a></p> <ul style="list-style-type: none"> <li>• XLF ( Financials)</li> <li>• XLV ( Health )</li> <li>• XLB ( Materials)</li> <li>• XLE (Energy)</li> <li>• XLK (Tech) / QQQ - Proxy</li> <li>• XLI ( Industrial) –</li> <li>• XLP ( Staples)</li> <li>• XLY ( Discretionary)</li> <li>• XHB ( Home Builders)</li> <li>• XLU ( Utility) SP</li> <li>• RTH ( Retail) - SP</li> <li>• SMH ( Sem.) SP</li> <li>• BBH ( Biotech) SP</li> </ul>	<p><a href="#">COMMODITY IDX</a></p> <ul style="list-style-type: none"> <li>• CRB /DBC</li> <li>• GLD (Gold)</li> <li>• SLV (Silver)</li> <li>• GDV (Miners)</li> <li>• OIL</li> <li>• Copper</li> <li>• DBA ( Agro)</li> <li>• UNG ( Natural Gas)</li> <li>• DBB ( Base M) SP</li> </ul>	<p><a href="#">CURRENCY</a></p> <ul style="list-style-type: none"> <li>• USD / DXY</li> <li>• EUR/USD</li> <li>• AUD/ USD</li> <li>• USD/JPY</li> <li>• GBP/ USD</li> </ul>

## POM criteria for Implementation on SPX

- POM is rated from 10 to 15
- POM 14 , 15 ( is Sell Signal) and 12 , 11 ( is Buy Signal ) both are the Actionable Area whereas POM 13 is A Neutral Signal for Risk management
- On way UP move, POM 13 signifies to STOP executing additional ‘New Buys’ that was initiated at POM 12 or POM 11 levels
- On way DOWN move, POM 13 signifies to STOP executing additional “ New Short Sells” that was initiated at POM 14 or POM 15 levels
- (Bear Markets) POM 15 is for - Net Short & POM 14 is for - Hedge Longs
- (Bull Markets) POM 15 is for -Hedge Longs & POM 14 is for - Partial Hedge
- POM 12 & 11 is for Net Long
- POM 10 is Climatic Crash low Buy Signal to add to Net long position (Rear event)

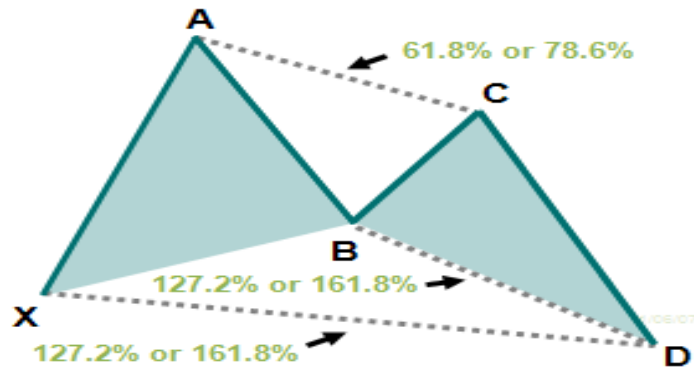
## Pythagoras Expansion / Contraction – (PEC) Model

- PEC Model is a 2<sup>th</sup> Derivative Timing Tool utilized on core currencies which identifies the turning point, for Tops and Bottoms on “Short & Intermediate term” Trend in the currency market.
- Methodology is based on Mathematical Pattern Recognition with Symmetrical Pythagoras Triangular expansion and contraction ( PEC) in concert with Price Oscillation ( POM) . This has a high probability for greater accuracy on Price projections at confluence when Integrated together.
- Once our POM analysis is complete, it will overlay PEC. The input signals are from tracking rolling Arithmetic Numerical series of Regression utilizing Fibonacci to Identify Triangular patterns of Expansion / Contraction. Triangular pattern completes at the convergence of 2 separate Fibonacci extension levels and overlay Price Oscillation Model.
- Since the Currency has 2 dimensional pairs, PEC is critical to analyze with 2x2 Fibonacci streams to achieve confluence point D coinciding with POM

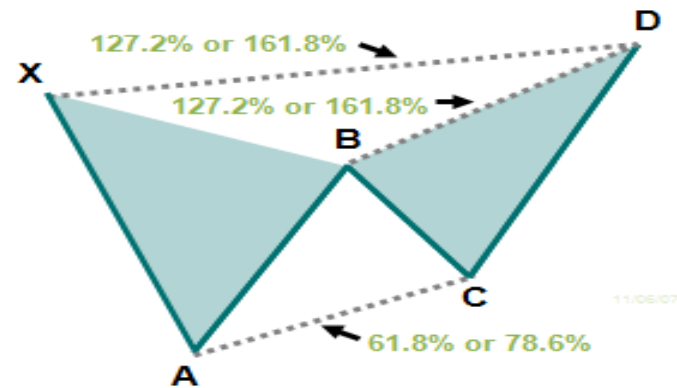
## PYTHAGORAS EXPANSION / CONTRACTION –(PEC) Model

The output signal of ABCD price moves preceded by a swing high or low (XA) generates projection point D, which is actionable point derived from 2 connecting triangles with convergence ratio. As with all geometric patterns, a Buy or Sell signal occurs as the pattern completes at point D

### Buy Pattern (bullish)



### Sell Pattern (bearish)



**Disclaimer :** The information in this report has been taken from sources believed to be reliable but SG Capital Research does not warrant its accuracy or completeness. Any opinions expressed herein reflect our judgment at this date and are subject to change. This document is for private circulation and for general information only. It is not intended as an offer or solicitation with respect to the purchase or sale of any security or as personalized investment advice. SG Capital Research or its Author does not assume any liability for any loss which may result from the reliance by any person or persons upon any such information or opinions. These views are given without responsibility on the part of SG Capital Research or its officials. No part of this report may be reproduced in any manner as Author reserves the distribution rights. Under Copyright 2002 Act: It is a violation of federal copyright and imposes liability for such infringement.