



Date : 13th November (Thursday)

MS –GOLD – POM - MARKET STRATEGY REPORT (SP)

By : Suneil R. Pavse, E : apavse@aol.com

● Executive Summary

	Current Price	POM Triggered within CZ & Date	Follow up <u>Announcement</u> Update For Trend Reversal	Progress Status	Current Position / Exposure	NEW ACTION (Trigger to Watch))	Upside CZ Near Term	Upside CZ Mid term	Downside CZ Near term	Downside CZ Mid term	Remark
GOLD	1160	POM 13 Re – Run Marked to Market on 1/01 start @1205	Trigger entry to scale in Within CZ 1190-1220 On 10/2	NEUTRAL To BULLISH	12% Net Long	NONE	Bounce target 1220	1 st Target PEC-D 1260 Bullish Top Weekly ABC to 1345 Bullish Top	Target to 3 gap – Exhaustion Downside to 1135-1125 Met & reversed up	Due to pendant at lows, one more push to 1140 is possible and then rally up (Bear Trap)	Move below Weekly 5 year CZ 1190-1220 Is false break.

ACTIONABLE IDEAS - Our Current position has 3.5% draw down.

For Bulls – Hold the position entered on 10/2 @ 1201. The first bounce to PEC-D 1220. Target ABC up @ 1260 Bullish top should be re tested.

For Bears – Heavy overhead CZ 1220-1190 on bounce can be considered to sell into only upon failure with Bearish Top.

GOLD – Overview & Update

POM 13 – @ 1204 – 1st Jan 2014 & Re run @ 1200, 10/2 .

Since last week's Report, the downside 3- GAP and exhaustion target to CZ 1135-1125 was met & Gold reversed with conviction and Sign of strength. Now it is backing of with lighter volume. Possibly with one last bear trap to 1145 on pendant lows. This should build up next ABC up.

We think Move below CZ 1190-1220 is false break under on weekly / monthly basis.

USD Target to 89 completed 2nd weekly ABC up which reversed move in GOLD. Retracement in USD should come in soon and fuel rally in Gold. Next leg up Gold should rally up in face of SPX declining.

Our 1st bounce target is 1220 and Upside ABC up target is 1260. It may take time to get our full projection soon.

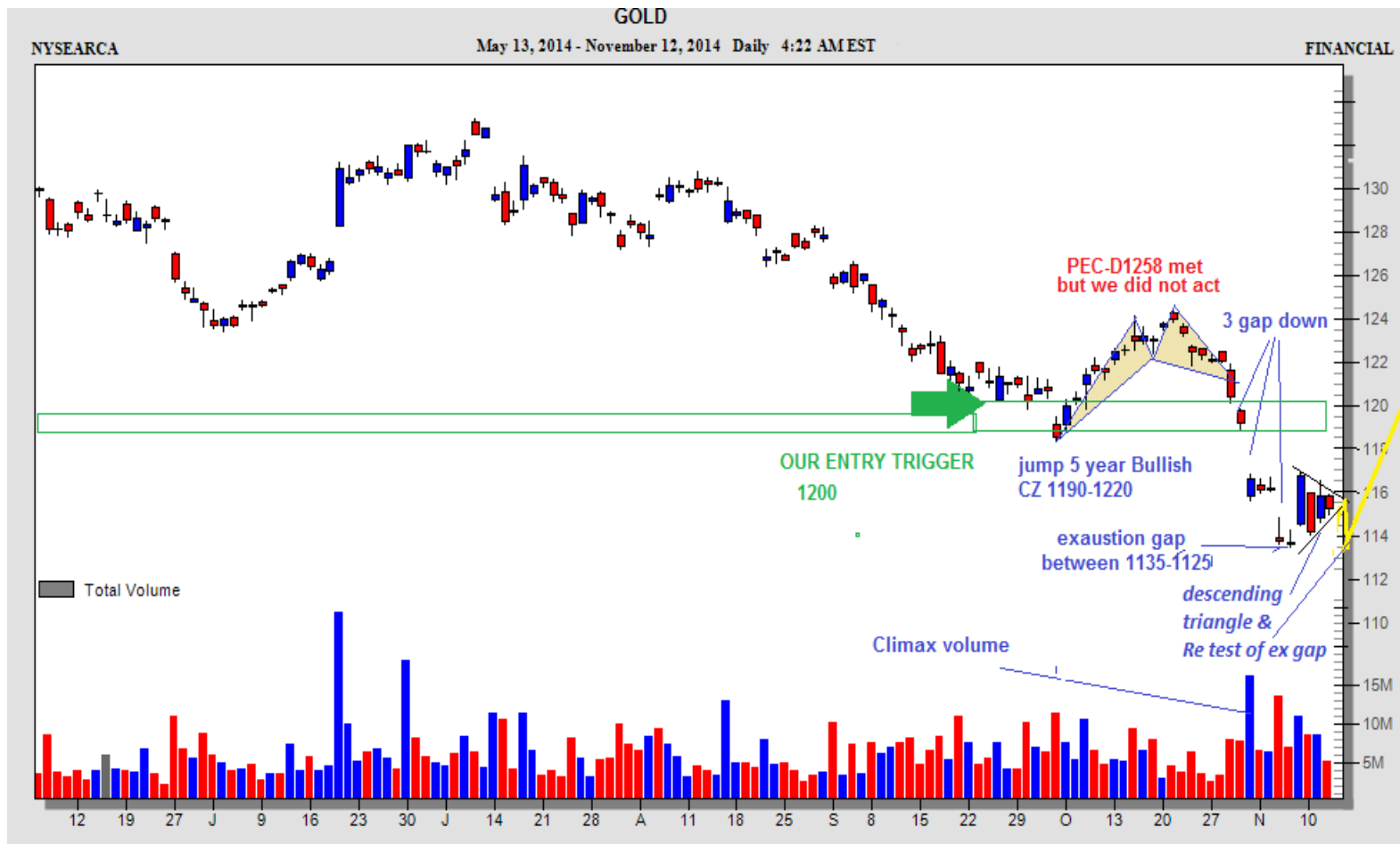
Monthly , Weekly and now daily charts appears to be going into same projected targets (Refer charts below)

GOLD- CZ/ PEC- D Analysis POM 13 - Daily chart – Chart 1

Downside - Possible Bear Trap on low volume descending triangle to target **1145** ,and then rally back up.

Earlier as noted in last Report, Final exhaustion Gap was completed at 1135 and rallied back (refer notes within charts below)

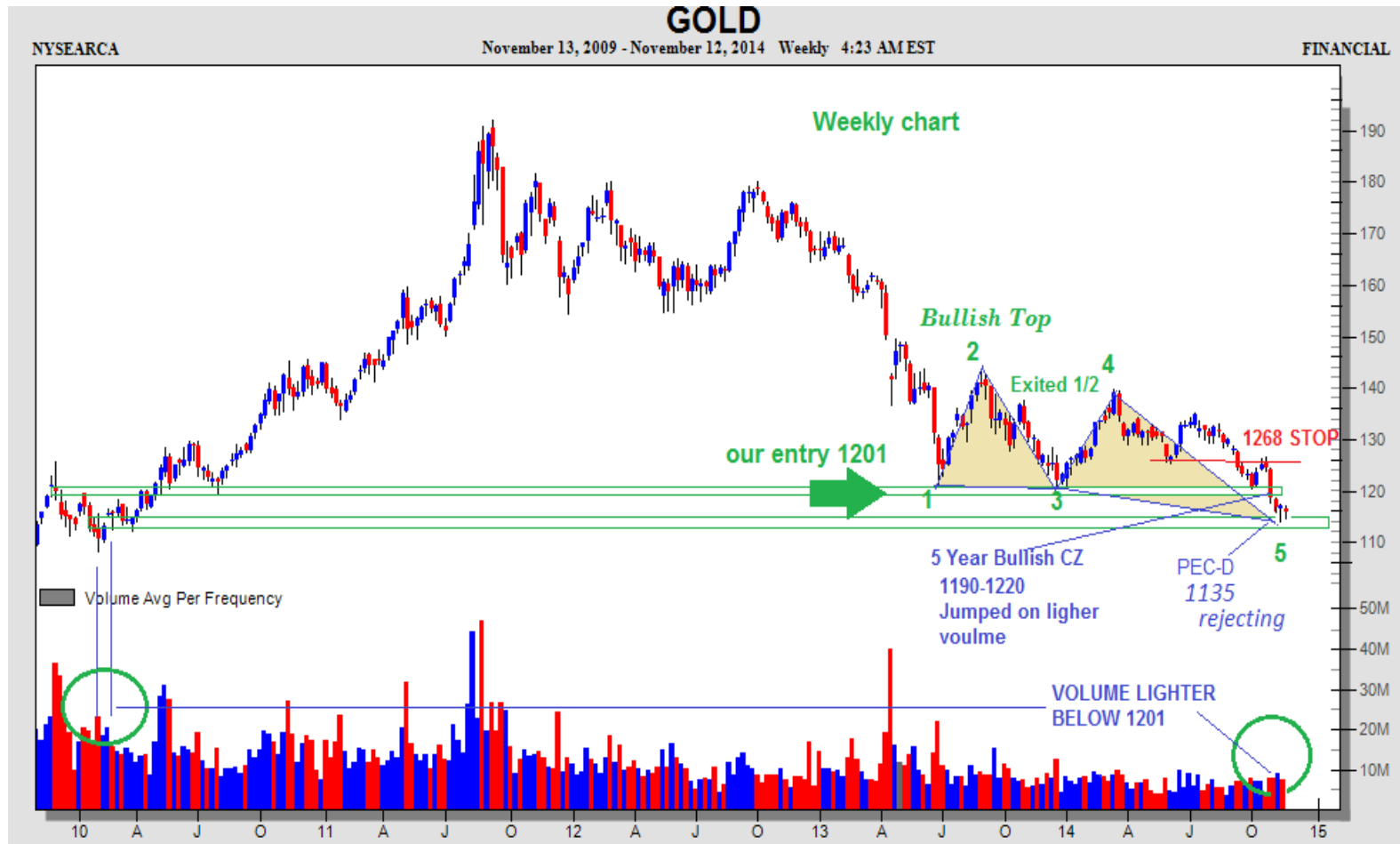
UPSIDE – Bounce to **Creek 1220-1190** 1st Target **PEC-D 1260**.



GOLD – Weekly – PEC –D / CZ Analysis - Chart 2

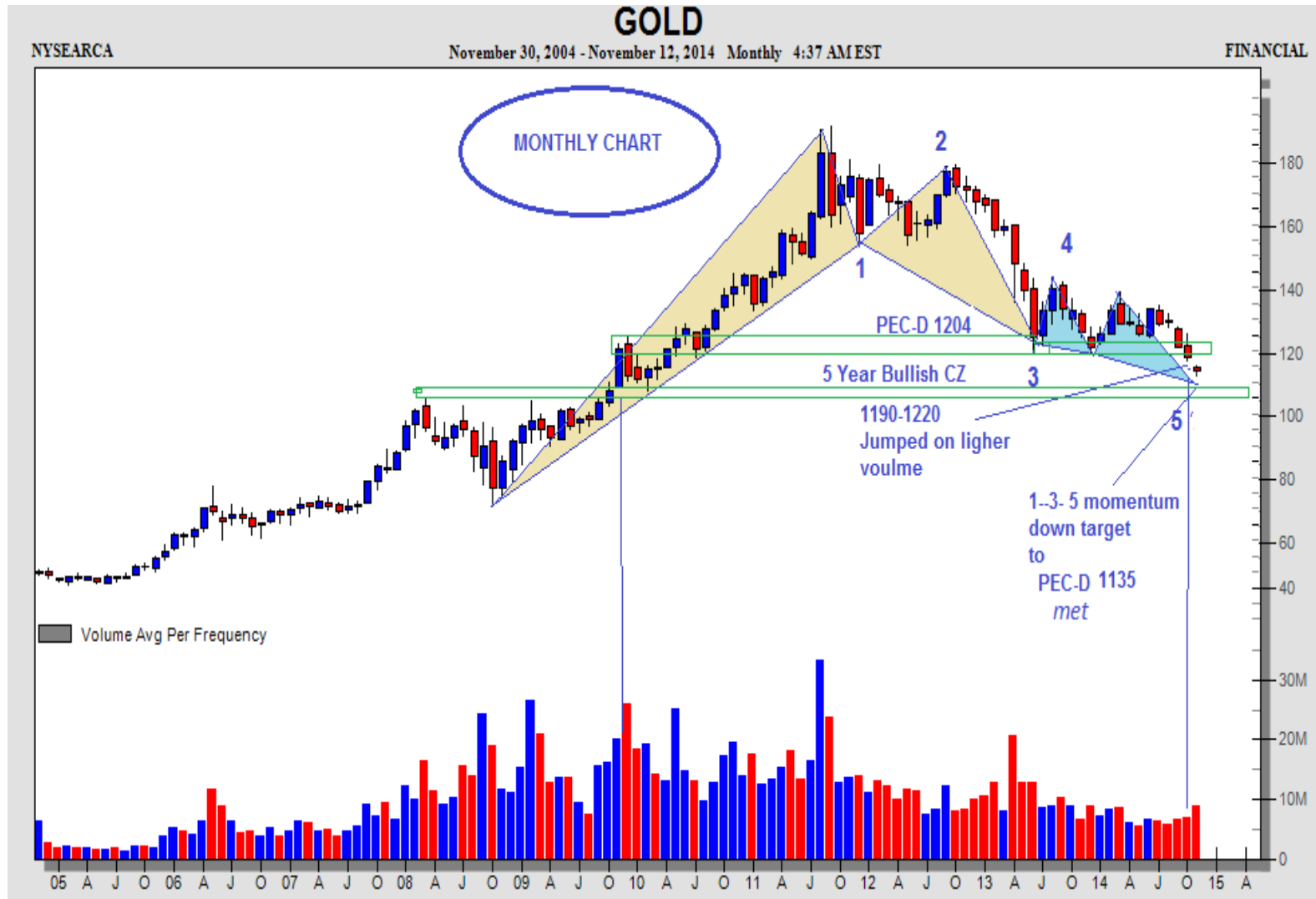
Downside – Rejecting lows and completed Wave 1-3-5 pattern @ PEC-D 1135

Chart below indicates the volume is way lighter on this breakaway move.



GOLD – Monthly – PEC-D / CZ Analysis - Chart 3

Monthly 1-3-5 pattern of downside to PEC-D 1135.



Appendix Content

- 2012 YTD – SPX - Position Summary
- Objectives & POM /CZ / PEC –D Guidelines – Refer to detail Annexure
- Full Utilization of “ SP” Report Guidelines & Limitations - Refer to detail Annexure
- POM – “ Price Oscillation Model “ Criteria
- PEC –D “ Pythagoras – Expansion & Contraction Criteria
- CZ- Confluence Zone Criteria
- TEXTURES – Bullish , Bearish , Neutral

Critical backdrop Notes –

- *Price path Analysis is running commentary of the Market’s price behavior , Not a Trade Signal.*
- *Intermittent CZ’s are Short time out / Risk management for overweight position / rebalancing spots. Unless your own Portfolio objective demands.*
- *POM’s are Action points. Also at times Action points is at Main CZ’s when specifically announced Triggers.*
- *Model does not encourage Buying in between unless its false break upside or false break downside soon after POM / Main CZ Trigger and is specifically announced . Model stays with Trend POM to POM Signal.*

(42) - INSTRUEMNTS COVERAGE SUMMARY

Re - STRATEGY & PROP ANALYSIS with – POM, CZ, PEC-D, PQV

GR 1 (13+2) Coverage in MS	GR 2 (9 +4) Coverage in SECTORS	GR 3 (8+1) Coverage in COMMODITY	GR 4 (5) Coverage in CURRENCY
<p>US BROADER IDX</p> <ul style="list-style-type: none"> • SPY (SPX 500) • DIA (DOW 30) • QQQ (NASD100) • IWM (Small Cap) • IYT (Transports) • NYA (NYSE) <p>BOND IDX</p> <ul style="list-style-type: none"> • TLT (Bonds) • MUB (Muni). (SP) <p>GLOBAL IDX</p> <ul style="list-style-type: none"> • EEM (Emerg.) • EWJ (Japan) • FXI (China) • EWZ (Brazil) • FTSE (Europe Proxy) • BSE (India) • EWA (Aust) SP <p>SP - Special situation</p>	<p>SECTORS IDX</p> <ul style="list-style-type: none"> • XLF (Financials) • XLV (Health) • XLB (Materials) • XLE (Energy) • XLK (Tech) / QQQ - Proxy • XLI (Industrial) – • XLP (Staples) • XLY (Discretionary) • XHB (Home Builders) • XLU (Utility) SP • RTH (Retail) - SP • SMH (Sem.) SP • BBH (Biotech) SP 	<p>COMMODITY IDX</p> <ul style="list-style-type: none"> • CRB /DBC • GLD (Gold) • SLV (Silver) • GDV (Miners) • OIL • Copper • DBA (Agro) • UNG (Natural Gas) • DBB (Base M) SP 	<p>CURRENCY</p> <ul style="list-style-type: none"> • USD / DXY • EUR/USD • AUD/ USD • USD/JPY • GBP/ USD

POM criteria for Implementation on SPX

- POM is rated from 10 to 15
- POM 14 , 15 (is Sell Signal) and 12 , 11 (is Buy Signal) both are the Actionable Area whereas POM 13 is A Neutral Signal for Risk management
- On way UP move, POM 13 signifies to STOP executing additional ‘New Buys’ that was initiated at POM 12 or POM 11 levels
- On way DOWN move, POM 13 signifies to STOP executing additional “ New Short Sells” that was initiated at POM 14 or POM 15 levels
- (Bear Markets) POM 15 is for - Net Short & POM 14 is for - Hedge Longs
- (Bull Markets) POM 15 is for -Hedge Longs & POM 14 is for - Partial Hedge
- POM 12 & 11 is for Net Long
- POM 10 is Climatic Crash low Buy Signal to add to Net long position (Rear event)

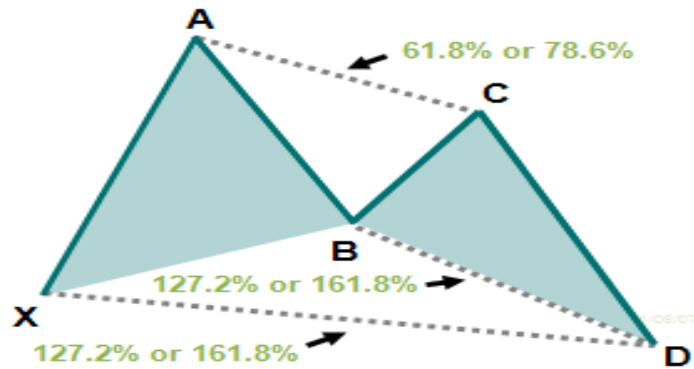
Pythagoras Expansion / Contraction – (PEC) Model

- PEC Model is a 2th Derivative Timing Tool utilized on core currencies which identifies the turning point, for Tops and Bottoms on “Short & Intermediate term” Trend in the currency market.
- Methodology is based on Mathematical Pattern Recognition with Symmetrical Pythagoras Triangular expansion and contraction (PEC) in concert with Price Oscillation (POM) . This has a high probability for greater accuracy on Price projections at confluence when Integrated together.
- Once our POM analysis is complete, it will overlay PEC. The input signals are from tracking rolling Arithmetic Numerical series of Regression utilizing Fibonacci to Identify Triangular patterns of Expansion / Contraction. Triangular pattern completes at the convergence of 2 separate Fibonacci extension levels and overlay Price Oscillation Model.
- Since the Currency has 2 dimensional pairs, PEC is critical to analyze with 2x2 Fibonacci streams to achieve confluence point D coinciding with POM

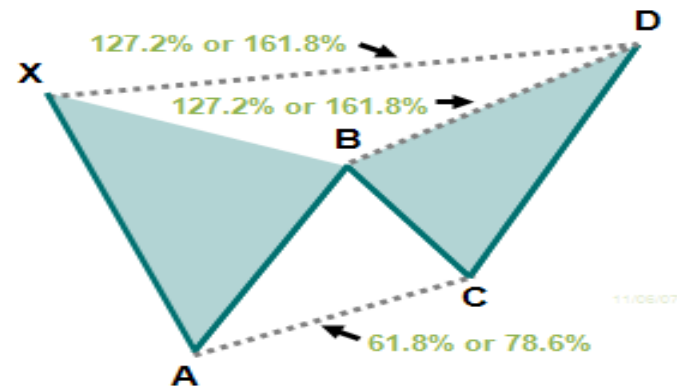
PYTHAGORAS EXPANSION / CONTRACTION –(PEC) Model

The output signal of ABCD price moves preceded by a swing high or low (XA) generates projection point D, which is actionable point derived from 2 connecting triangles with convergence ratio. As with all geometric patterns, a Buy or Sell signal occurs as the pattern completes at point D

Buy Pattern (bullish)



Sell Pattern (bearish)



Disclaimer : The information in this report has been taken from sources believed to be reliable but SG Capital Research does not warrant its accuracy or completeness. Any opinions expressed herein reflect our judgment at this date and are subject to change. This document is for private circulation and for general information only. It is not intended as an offer or solicitation with respect to the purchase or sale of any security or as personalized investment advice. SG Capital Research or its Author does not assume any liability for any loss which may result from the reliance by any person or persons upon any such information or opinions. These views are given without responsibility on the part of SG Capital Research or its officials. No part of this report may be reproduced in any manner as Author reserves the distribution rights. Under Copyright 2002 Act: It is a violation of federal copyright and imposes liability for such infringement.