



SG Capital Research

Global Market Insights

Research Note – Weekly Market Strategy Global (A # 2) – QUANTITATIVE & BASE TECHNICALS

MAEG- WKLY MKTSTR- GL--SG 2011 # AUGUST_10

For Immediate Release – *Wednesday AM (EST) – Thursday (SP)*

By: Suneil R Pavse .

Market Strategy Global (A # 1) – QUANTITATIVE & BASE TECHNICALS

- SPX - S&P 500
- QQQ – NASD 100
- IWM - RUSSELL 2000
- EEM - EMRG
- EZU - EUROPE
- EWA – AUST
- EWH – HK

- Selected Sector may have Analytic Charts as Titled below
 1. SETUP charts Weekly – 3 Year with RSI, CCI, MACD (11 W / 40 W) SMA
 - a. Trend Analysis
 2. SETUP charts Daily – 6 Months with RSI, CCI, MACD (11D / 55D) SMA
 - Trend & Channel Analysis
 - Fibonacci Retracement
 3. SD - RATIO CHARTS : QQQ, IWM, EEM, EZU, EWA, EWH Correlation Ratio Analysis with SPX
 - 365 days
 - LT basis

- Valuation Tools - (Work in Progress)

Q,

CAPE,

SPX/GDP.

- Trend Model Status - (Work in Progress)

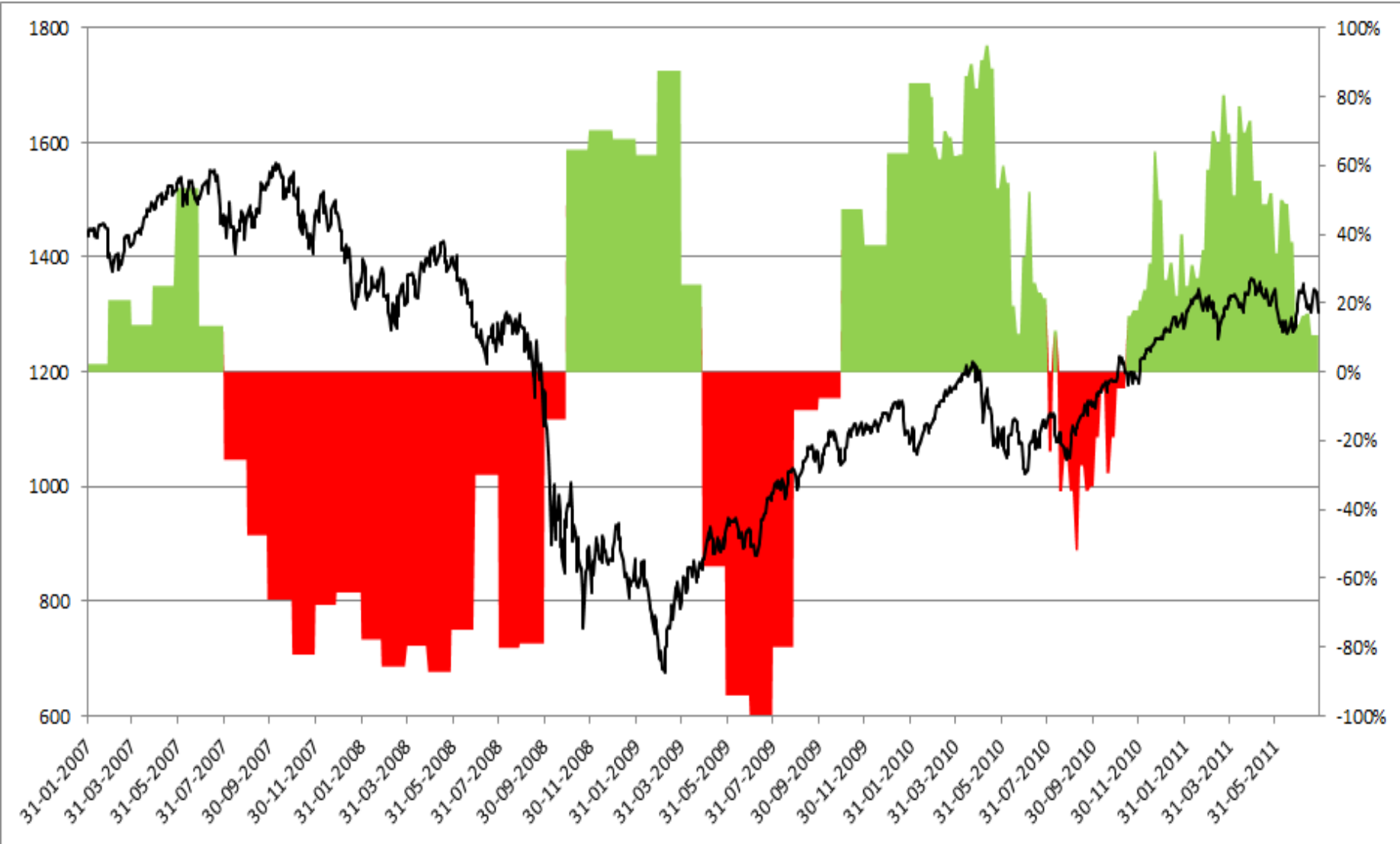
XX,

SET UP INDEX

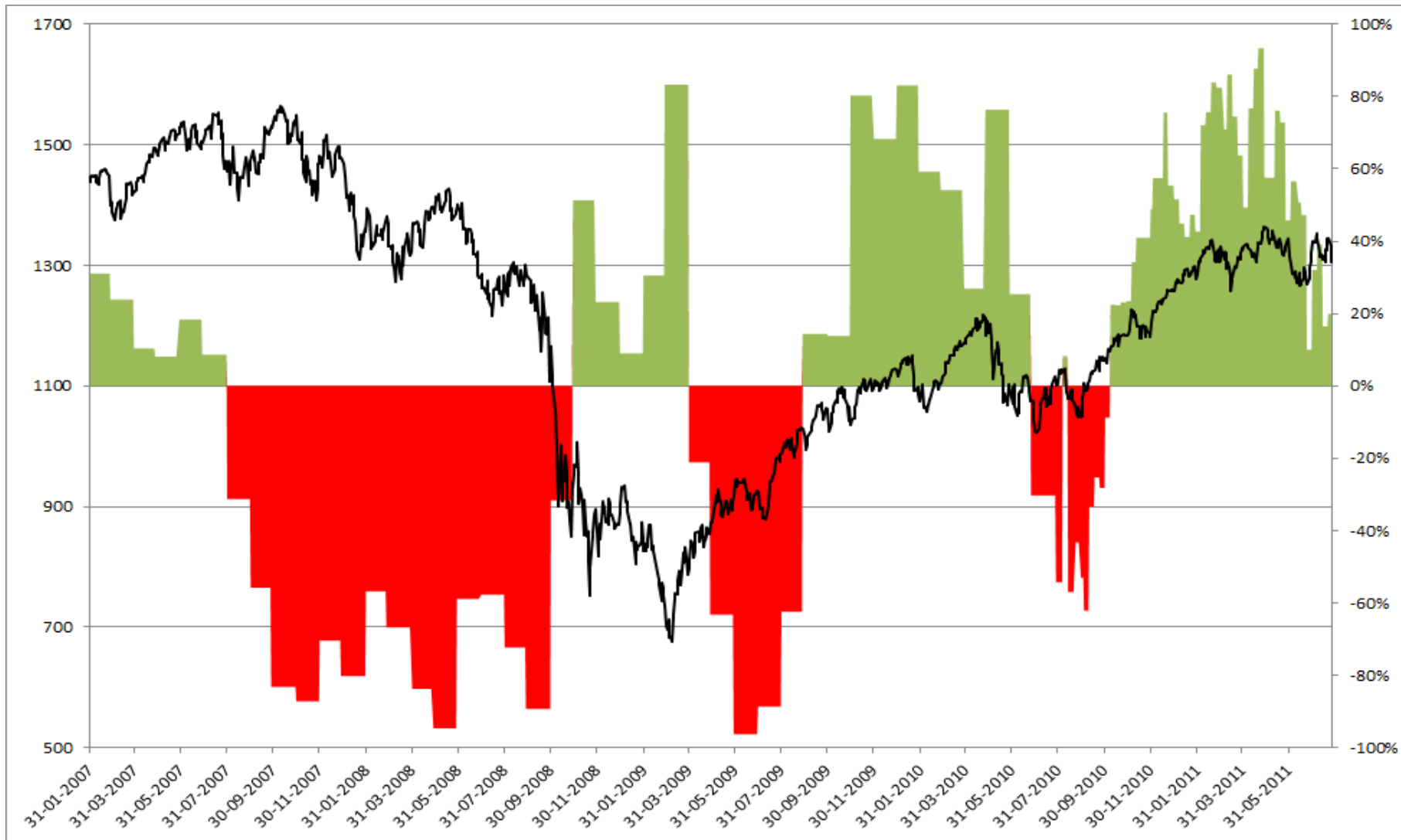
GREEN ZONE / RED ZONE

Setup Index Net Exposure (sample) To be modified for revised EBV score

(Work in Progress)



**Setup Index Net Exposure (Market Cap) (sample) To be modified for revised EBV score
(Work in Progress)**



- Sentiment Summary - 3rd Party

Investors Intelligence . (II)– Past 4 weeks data .. Courtesy – Schaeffer’s Research

Date Published	Percent Bullish	Percent Bearish
08/10	47.3	23.7
08/03	46.3	24.7
07/27	49.5	21.5
07/20	46.2	21.5
07/13	44.1	22.6

SD – PROCESS

Under/Over valuation criteria based on +/- 2 SD levels v/ s SPX.

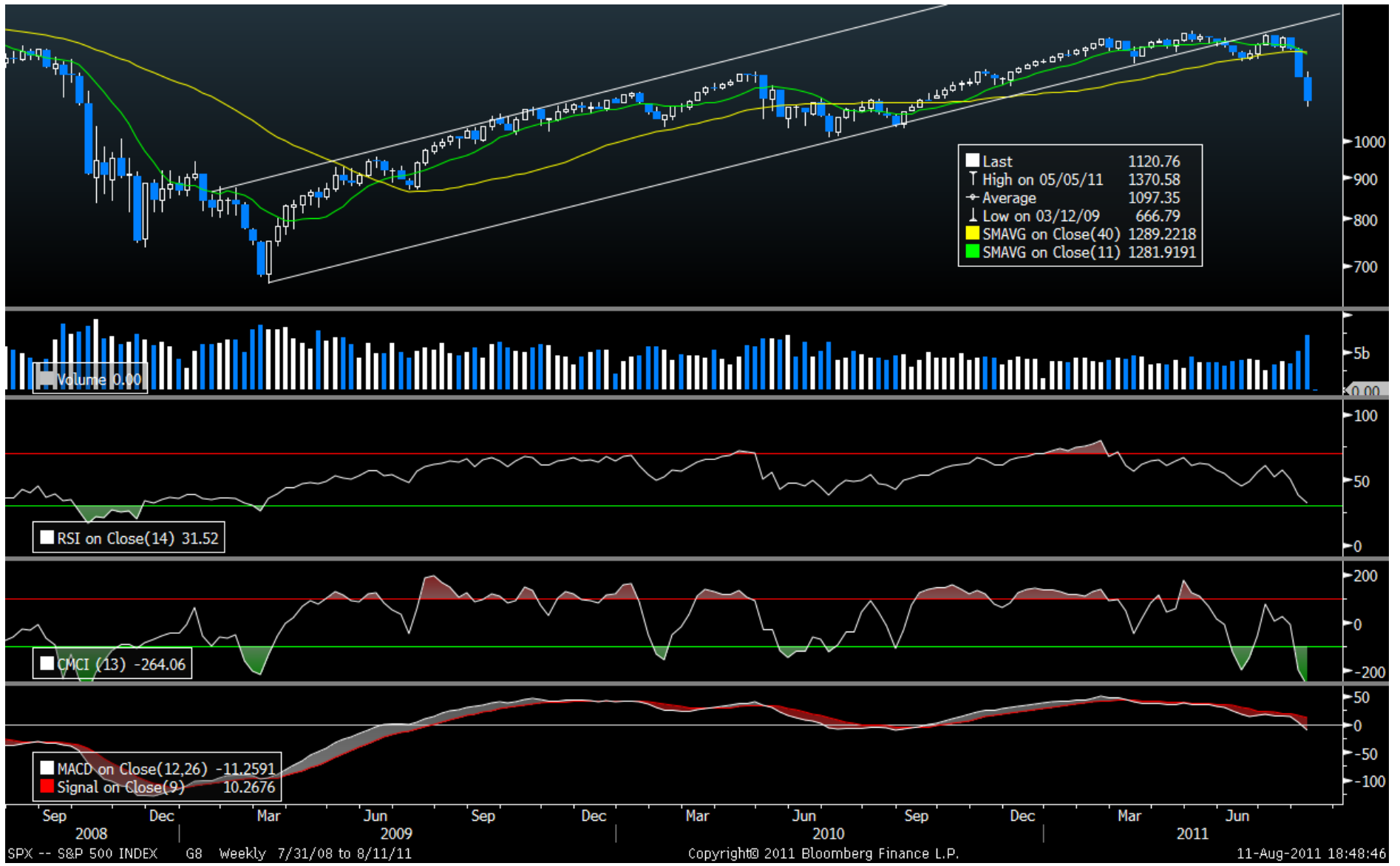
1. Below -2 SD level on 365 D basis: Undervalued

EZU (ST)

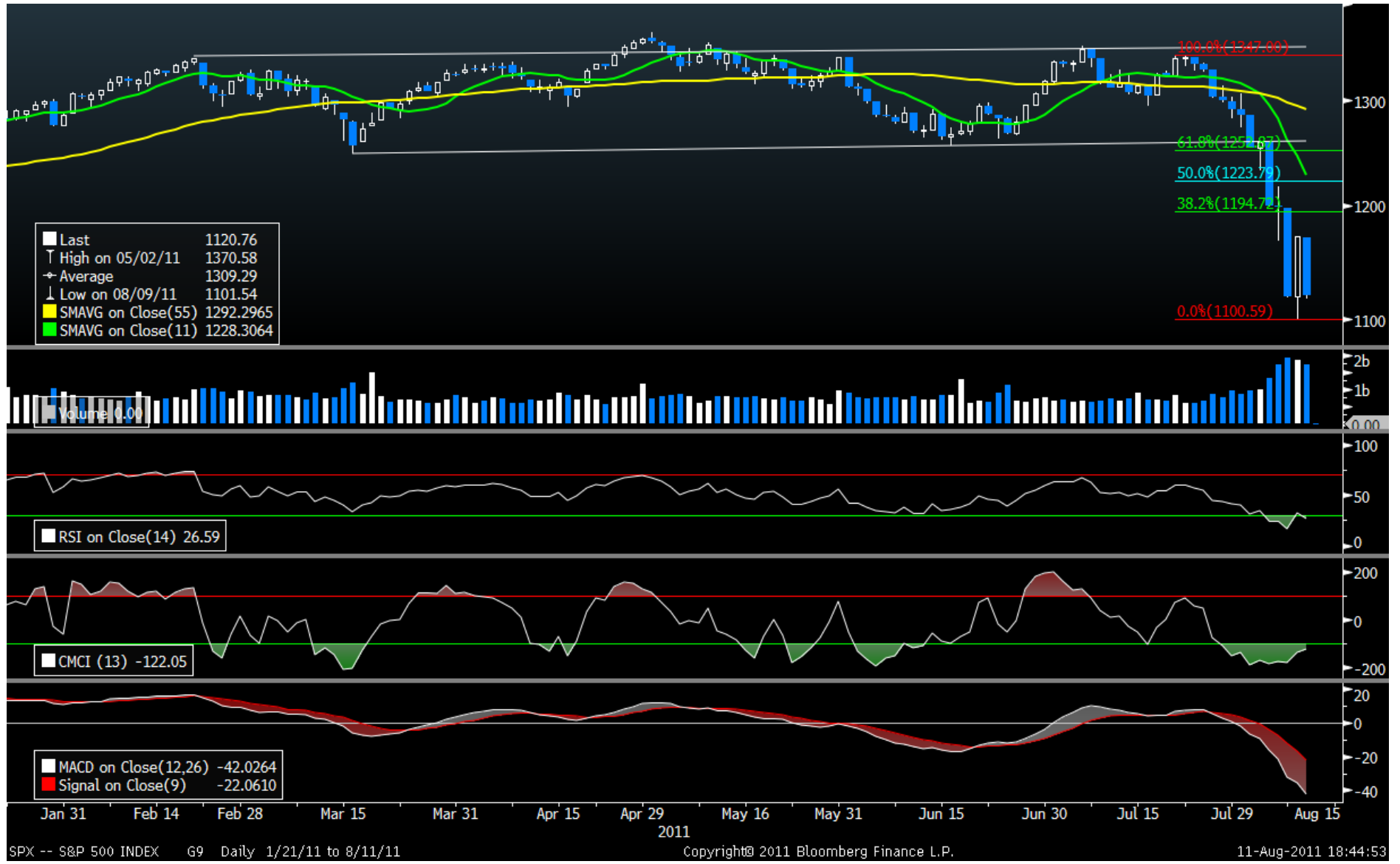
2. Above +2 SD level on 365 D basis: Overvalued

QQQ (ST)

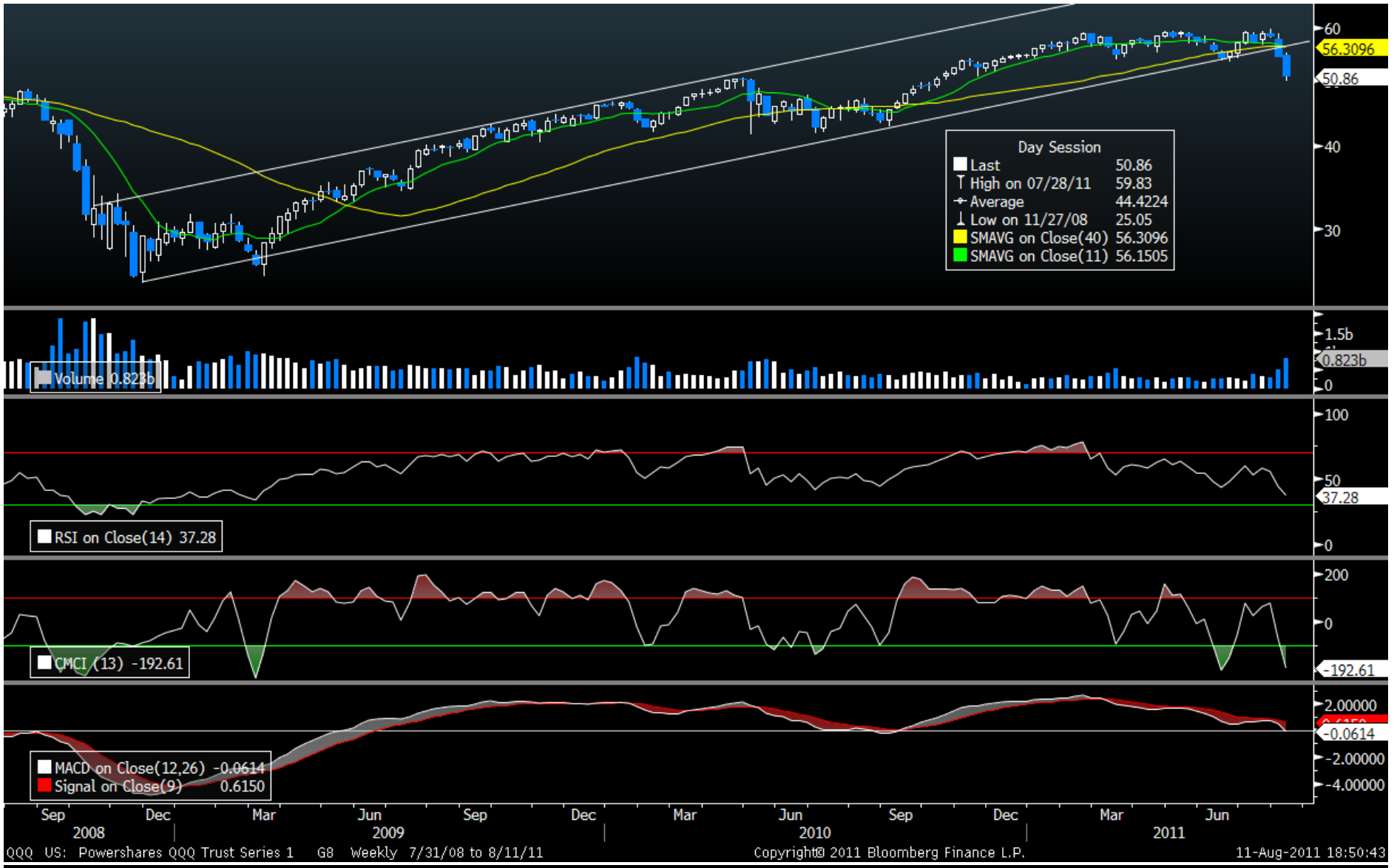
SPX - Weekly- 3 Year with RSI, CCI, MACD & Trend line Channel - (11 W / 40 W SMA)



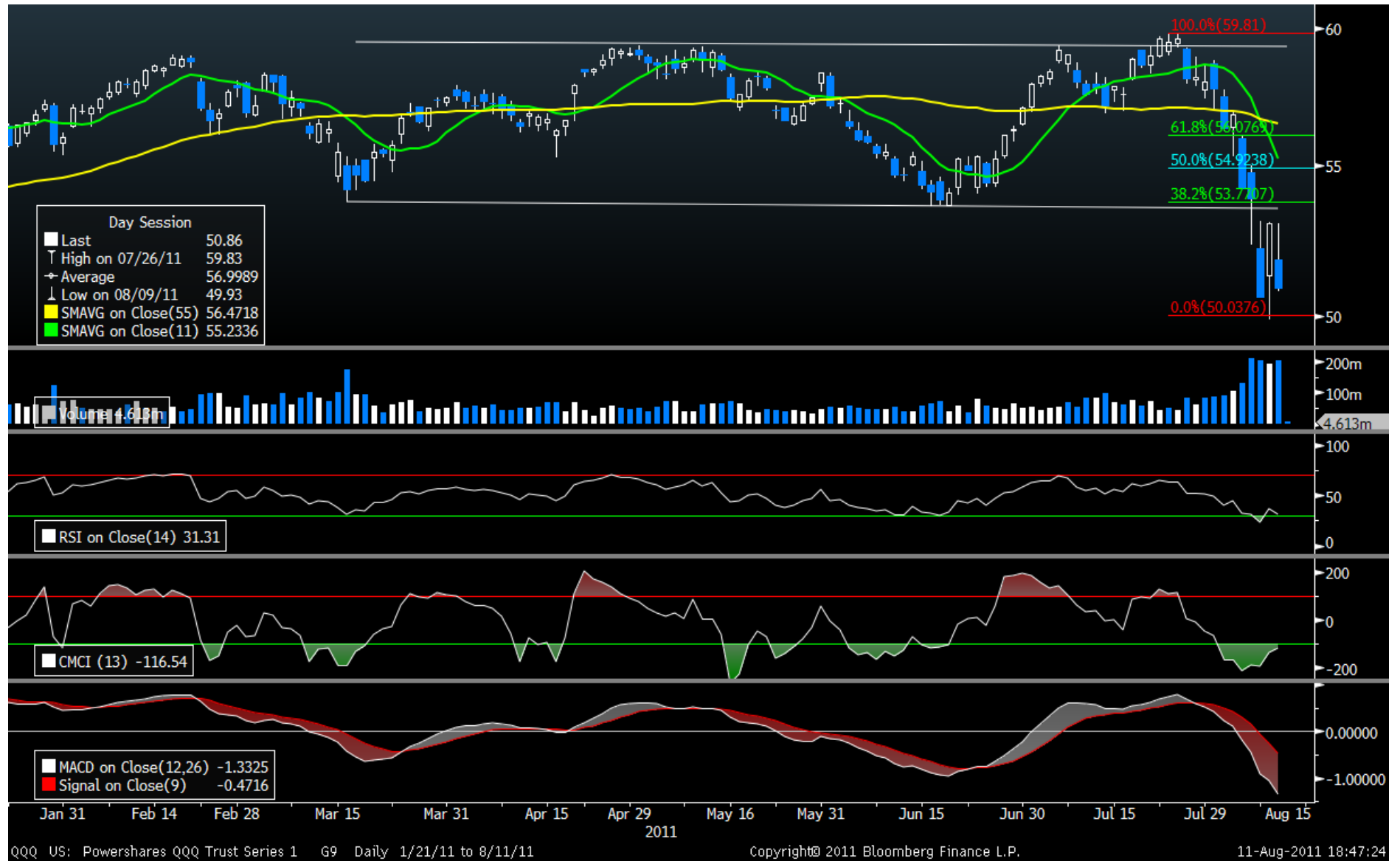
SPX – Daily – 6 Months with with RSI, CCI, MACD, Trend line Channel & Fib series- (11D / 55D),



QQQ - Weekly- 3 Year with RSI, CCI, MACD & Trend line channel - (11 W / 40 W SMA)

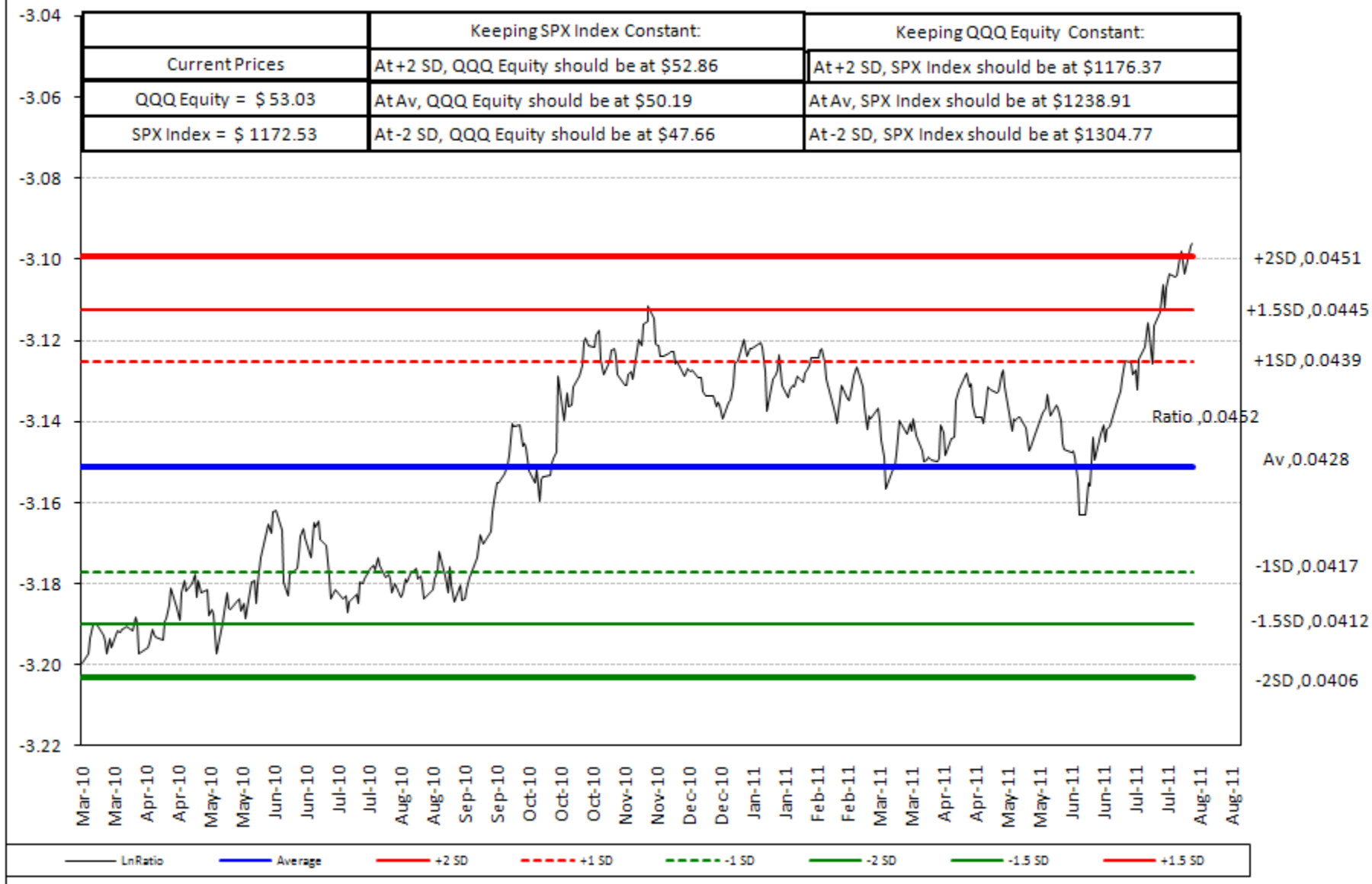


QQQ – Daily – 6 Months with RSI, CCI, MACD, Trend line channel & Fib series- (11D / 55D),



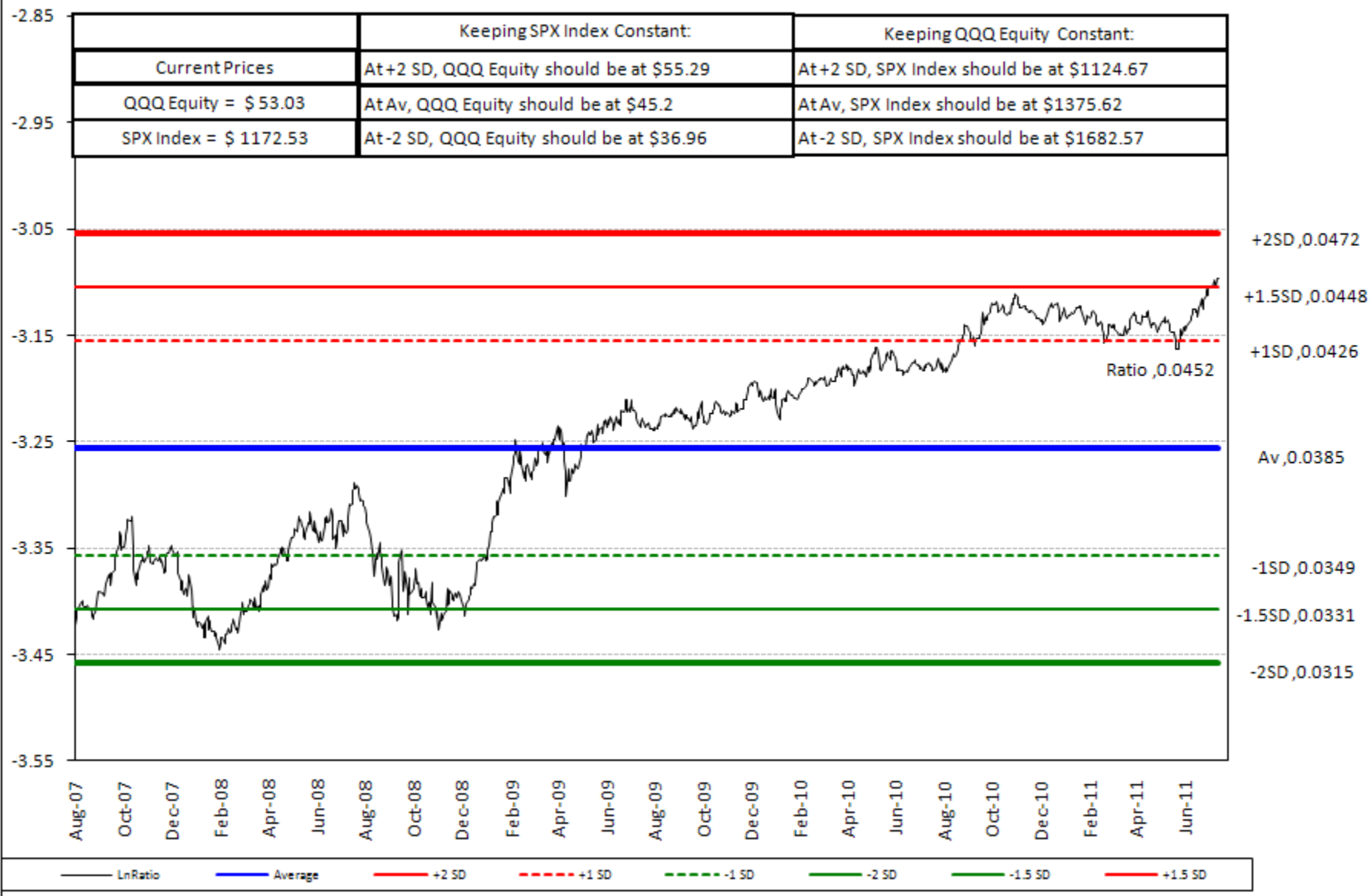
QQQ : SPX RATIO - Correlation Ratio Analysis with SPX – 365 days Time basis

Long QQQ Equity and Short SPX Index, Updated till 09 Aug 2011, LAST 365 TRADING DAYS ANALYSIS



QQQ Correlation Ratio Analysis with SPX – Full Time basis

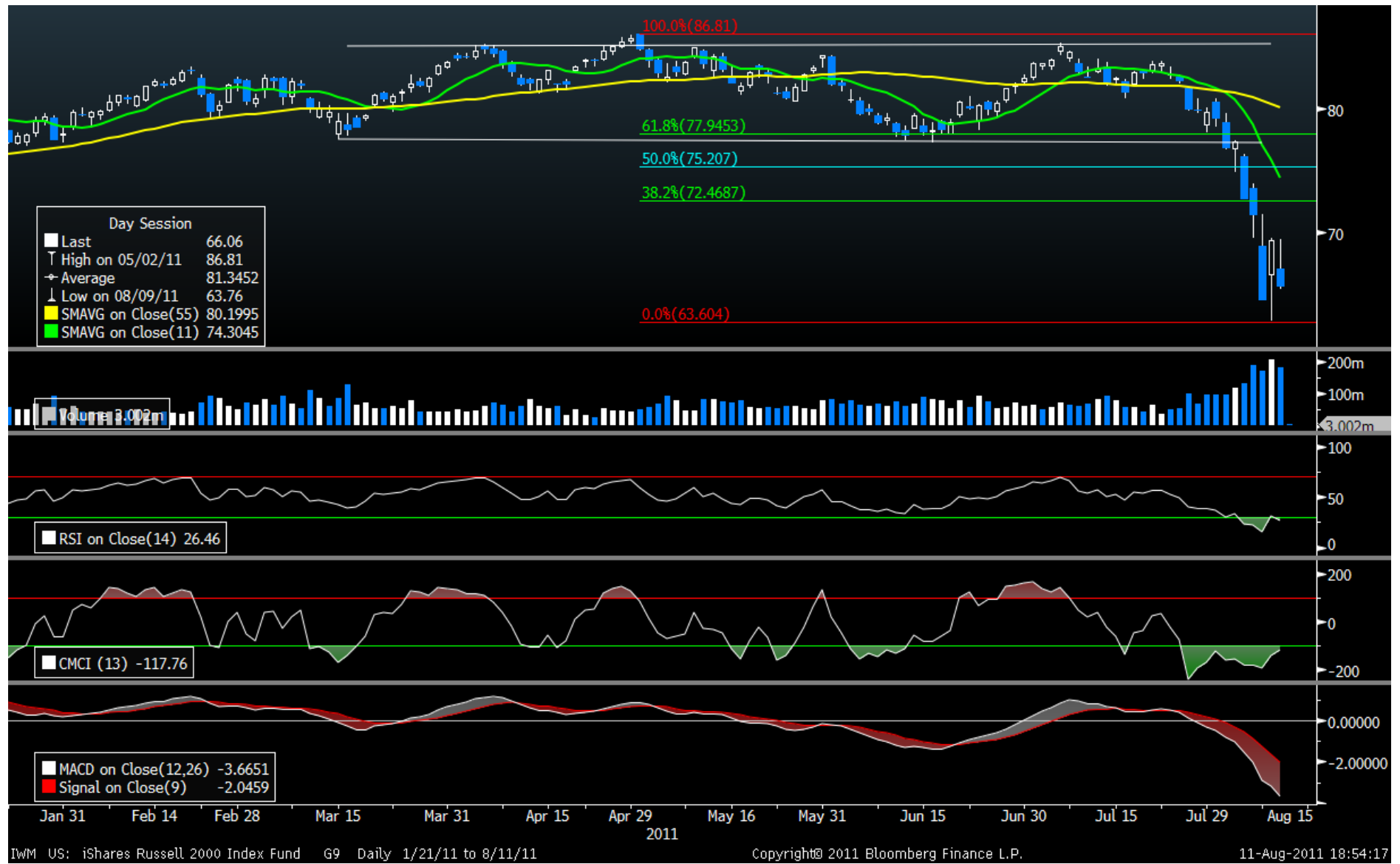
Long QQQ Equity and Short SPX Index, Updated till 09 Aug 2011, LAST 4 Years(1000 TRADING DAYS)



IWM - Weekly- 3 Year with RSI, CCI, MACD & Trend line Channel - (11 W / 40 W SMA)

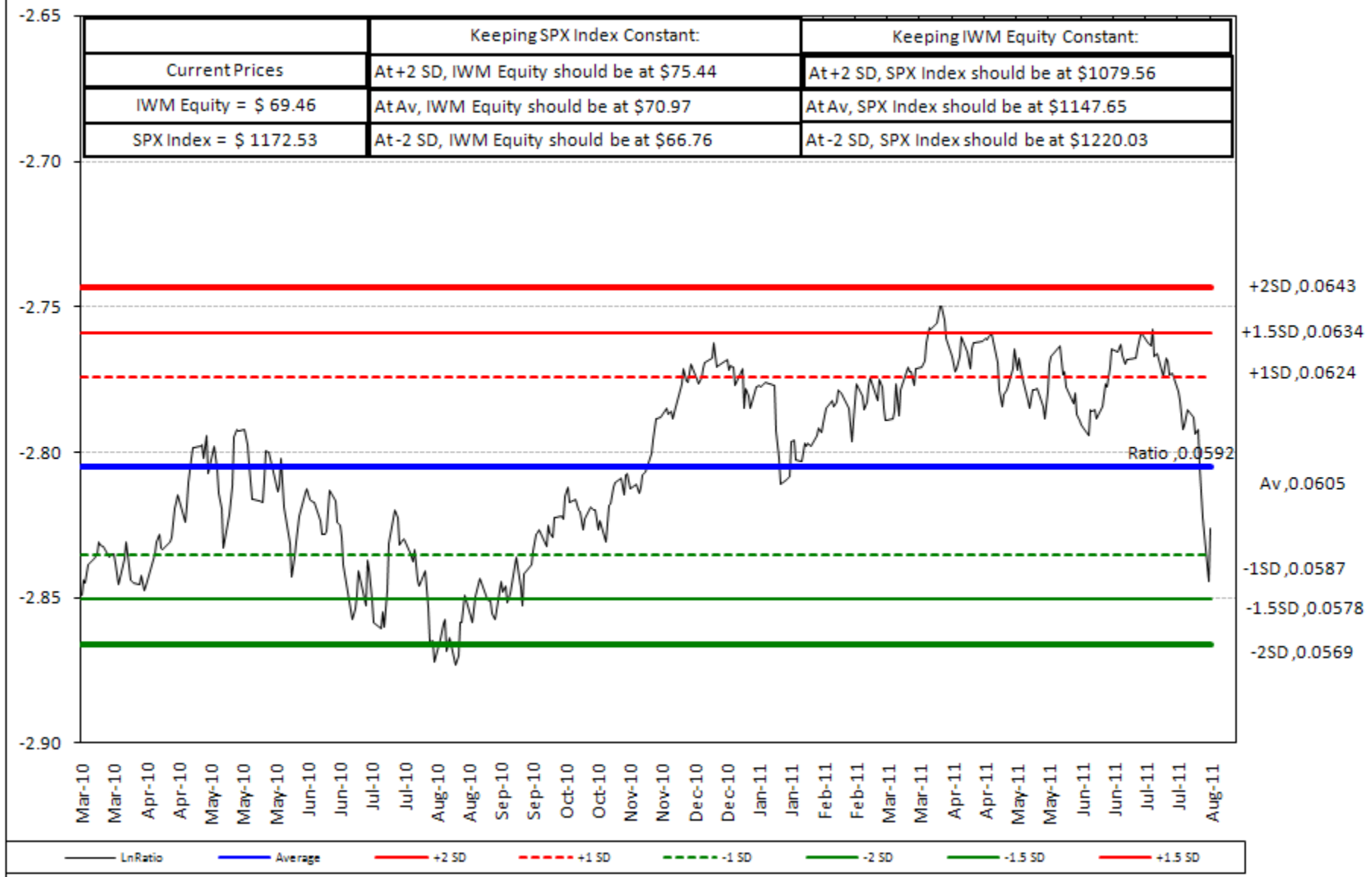


IWM – Daily – 6 Months with RSI, CCI, MACD, Trend line Channel & Fib-series- (11D / 55D)



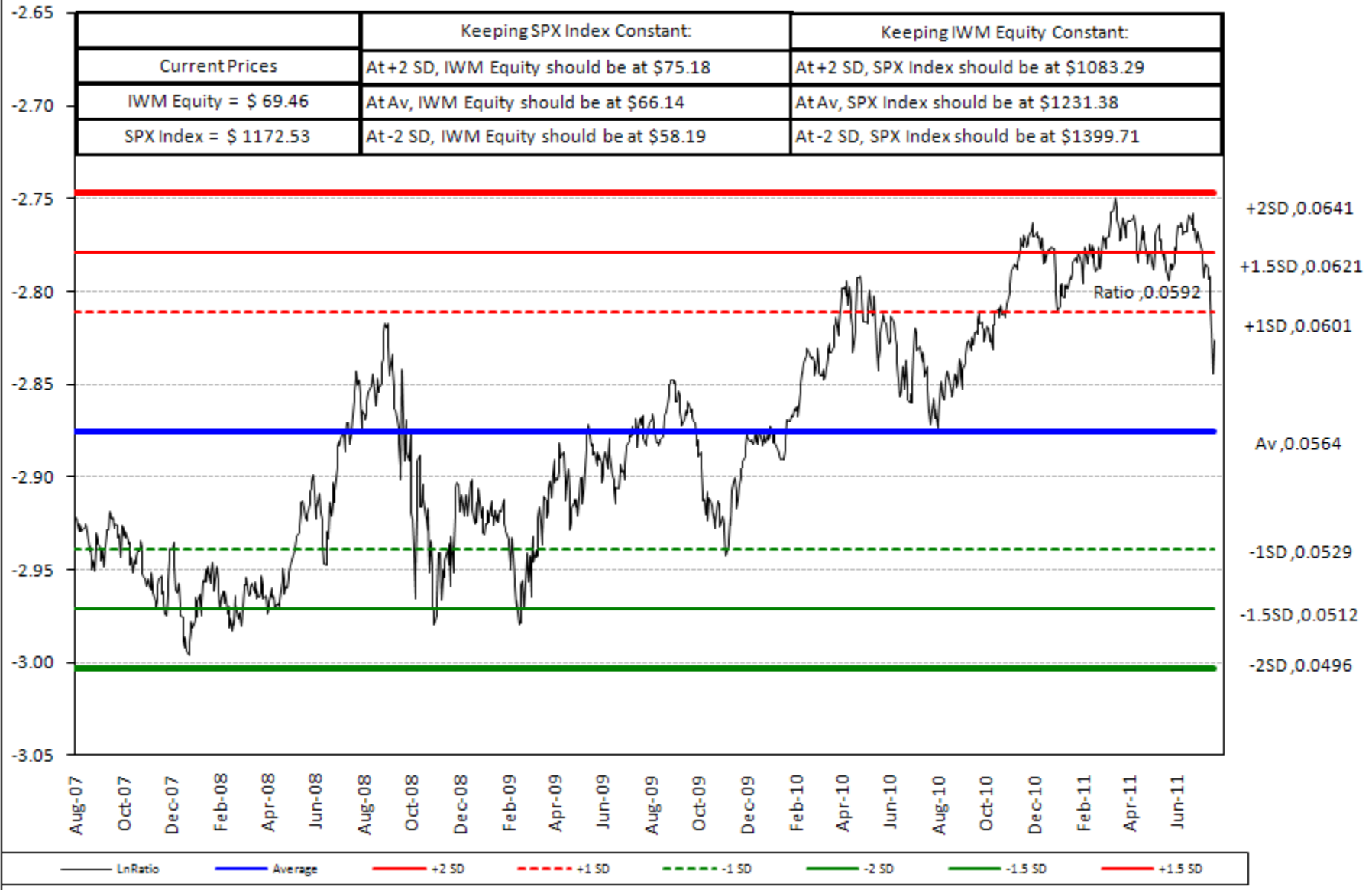
IWM : SPX RATIO - Correlation Ratio Analysis with SPX – 365 days Time basis

Long IWM Equity and Short SPX Index, Updated till 09 Aug 2011, LAST 365 TRADING DAYS ANALYSIS

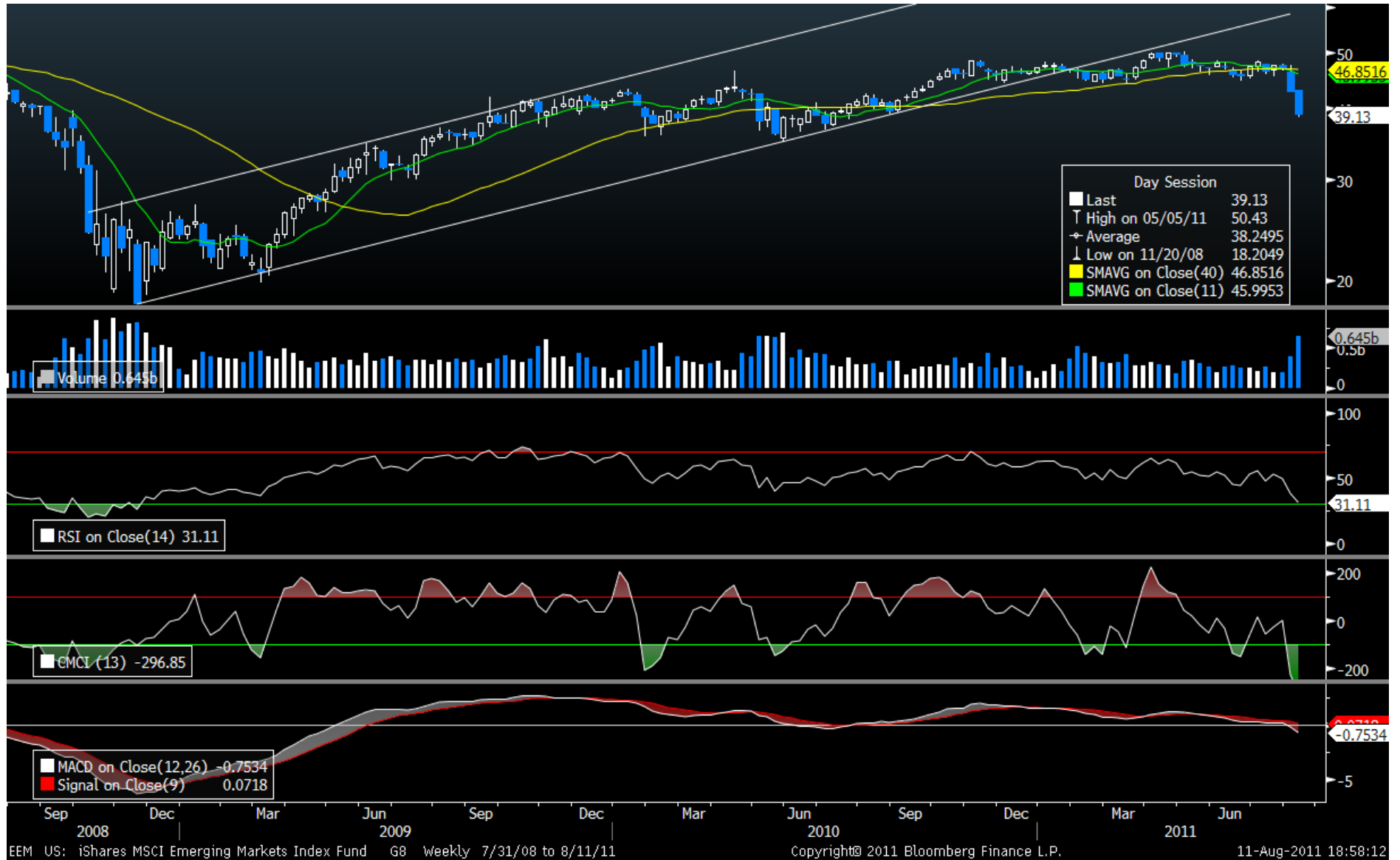


IWM Correlation Ratio Analysis with SPX – Full Time basis

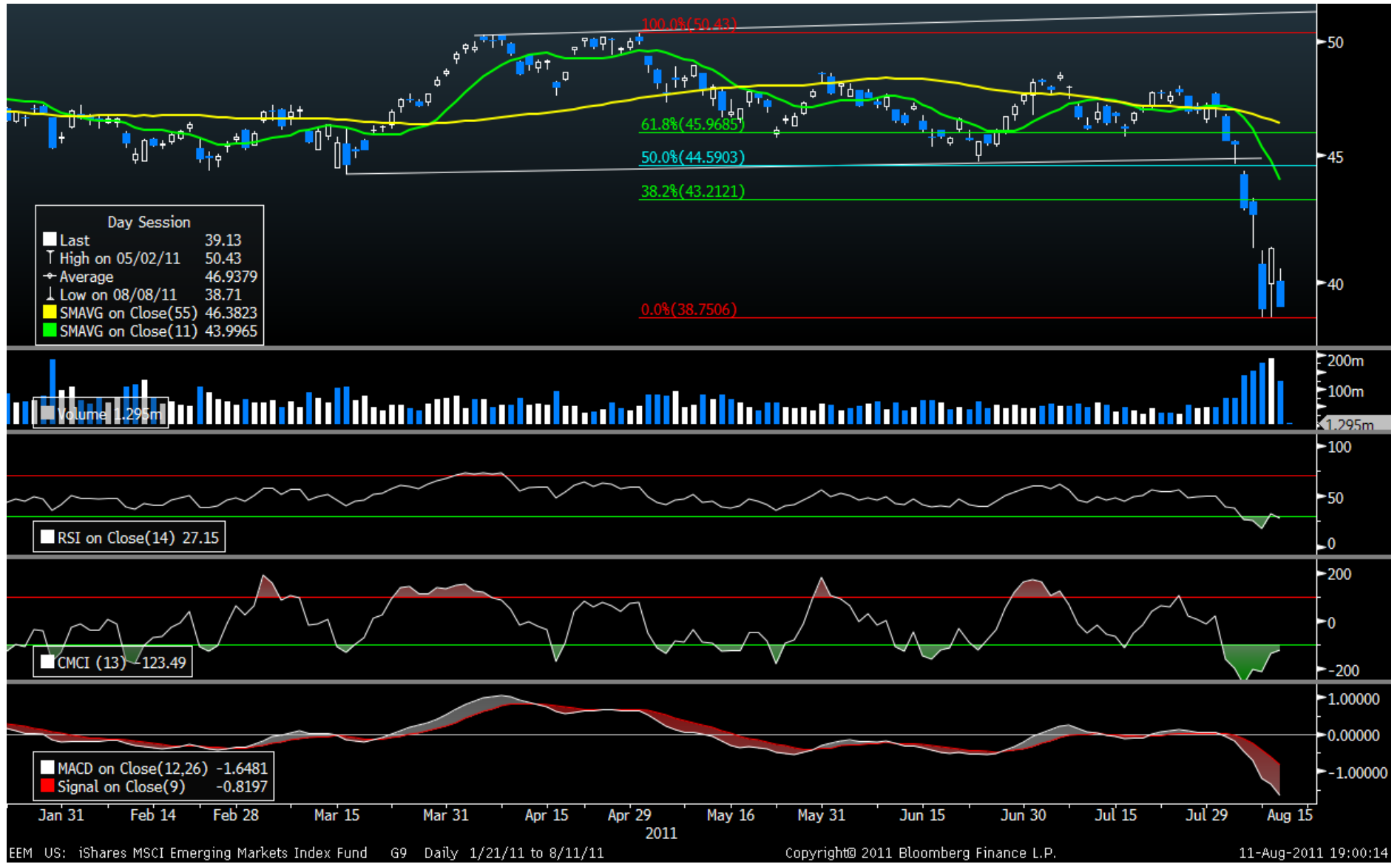
Long IWM Equity and Short SPX Index, Updated till 09 Aug 2011, LAST 4 Years(1000 TRADING DAYS)



EEM - Weekly- 3 Year with RSI, CCI, MACD & Trend line Channel - (11 W / 40 W SMA)

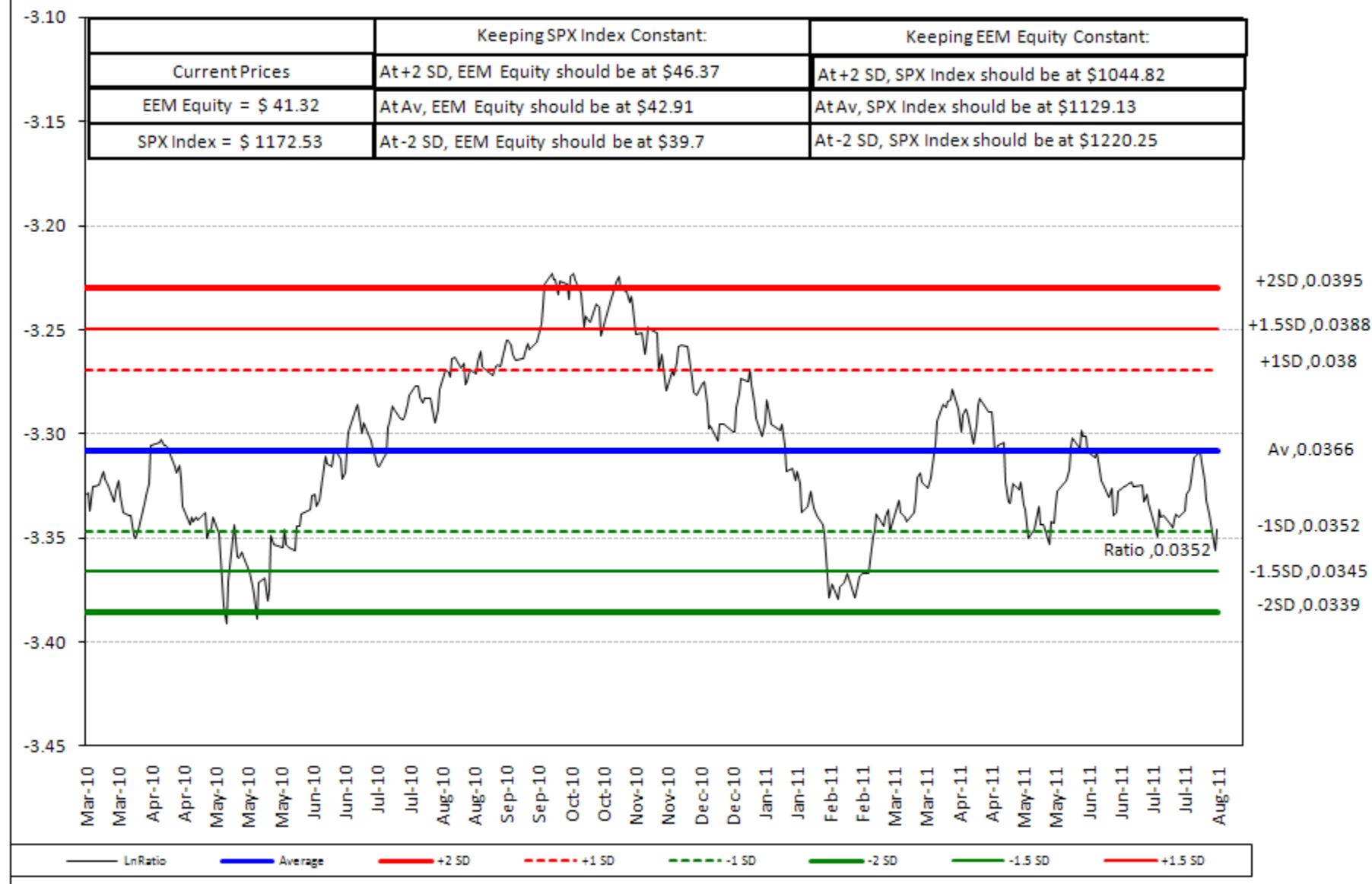


EEM – Daily – 6 Months with RSI, CCI, MACD, Trend line Channel & Fib-series - (11D / 55D)



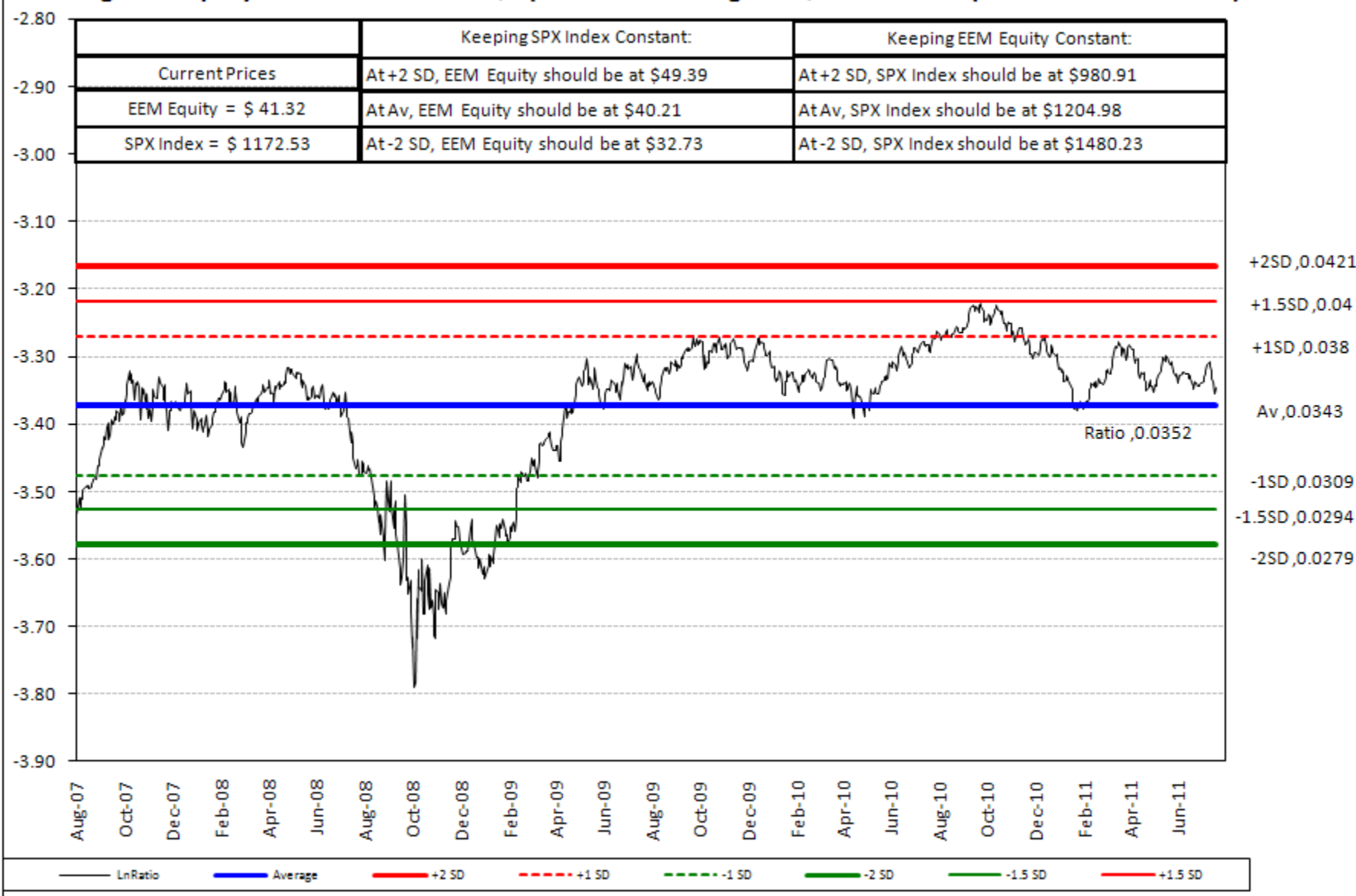
EEM : SPX RATIO - Correlation Ratio Analysis with SPX – 365 days Time basis

Long EEM Equity and Short SPX Index, Updated till 09 Aug 2011, LAST 365 TRADING DAYS ANALYSIS

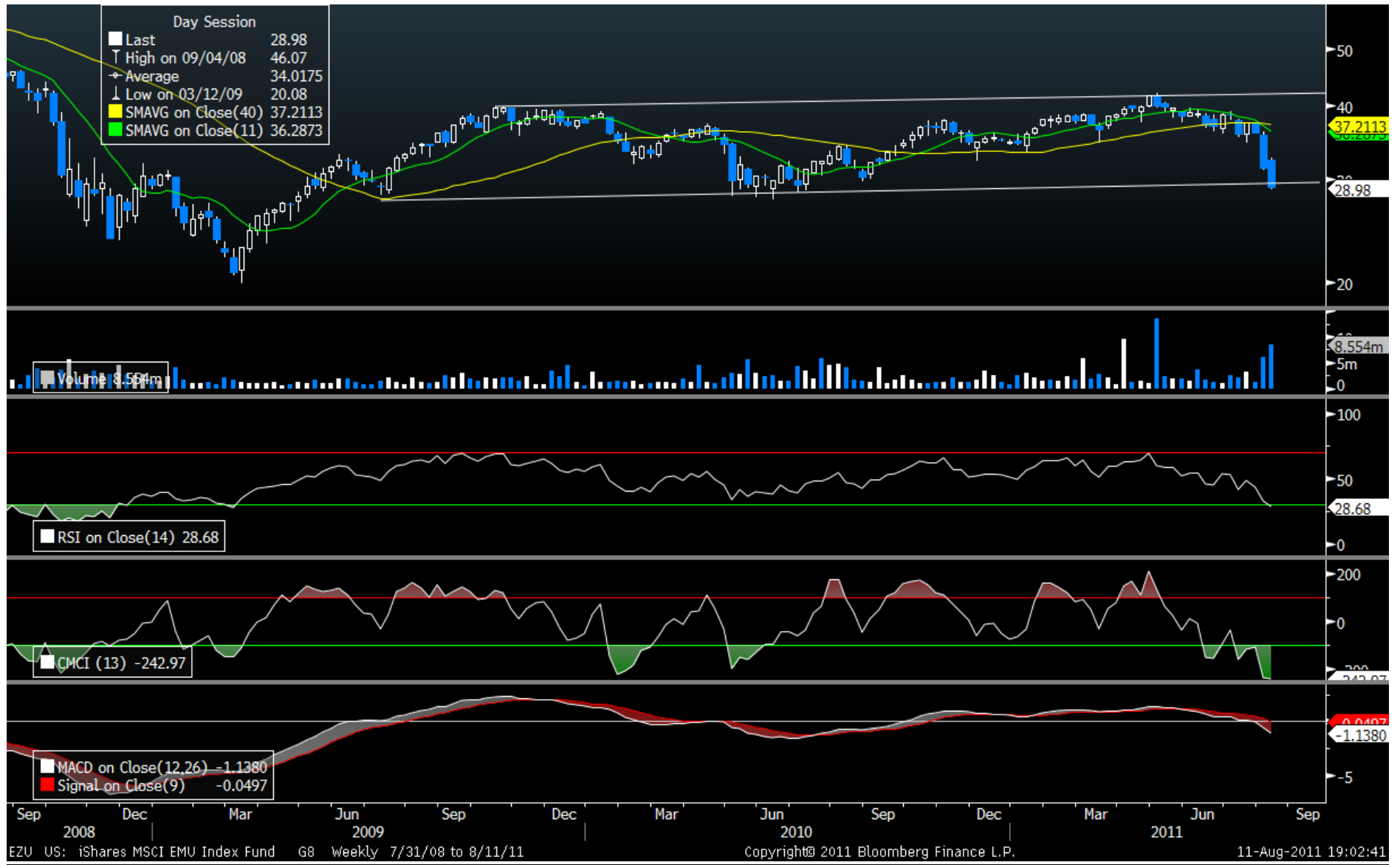


EEM Correlation Ratio Analysis with SPX – Full Time basis

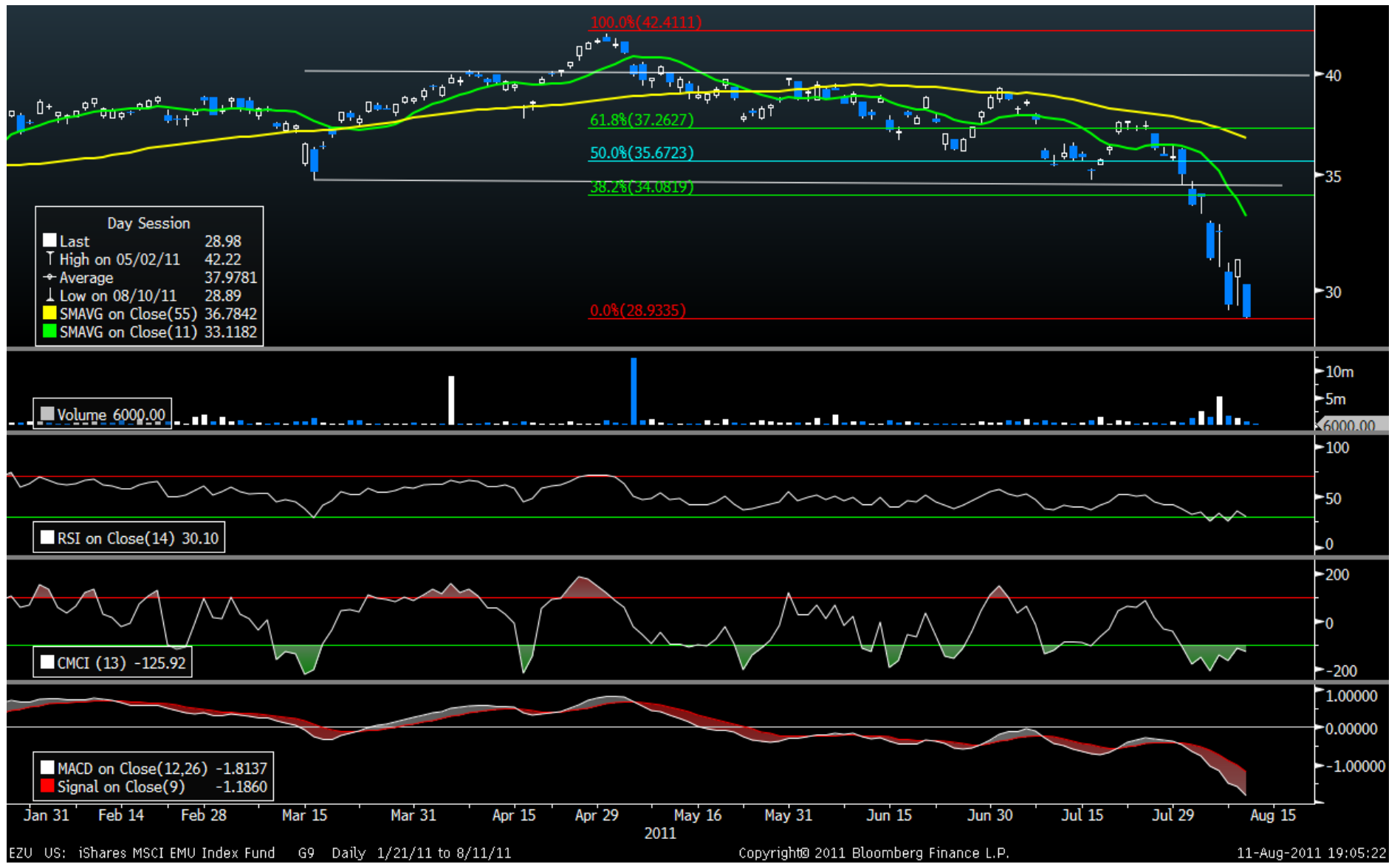
Long EEM Equity and Short SPX Index, Updated till 09 Aug 2011, LAST 4 Years(1000 TRADING DAYS)



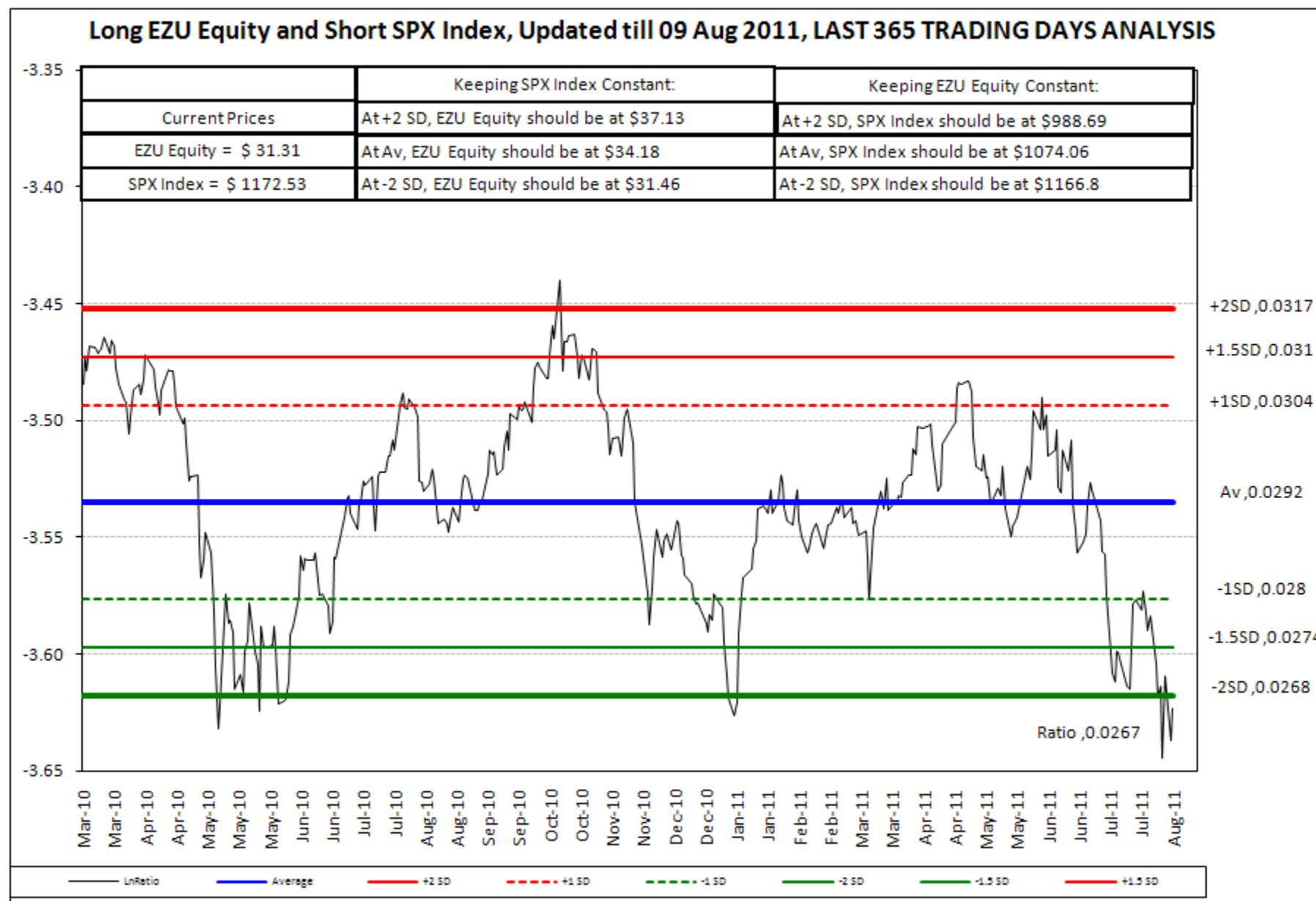
EZU - Weekly- 3 Year with RSI, CCI, MACD & Trend line Channel - (11 W / 40 W SMA)



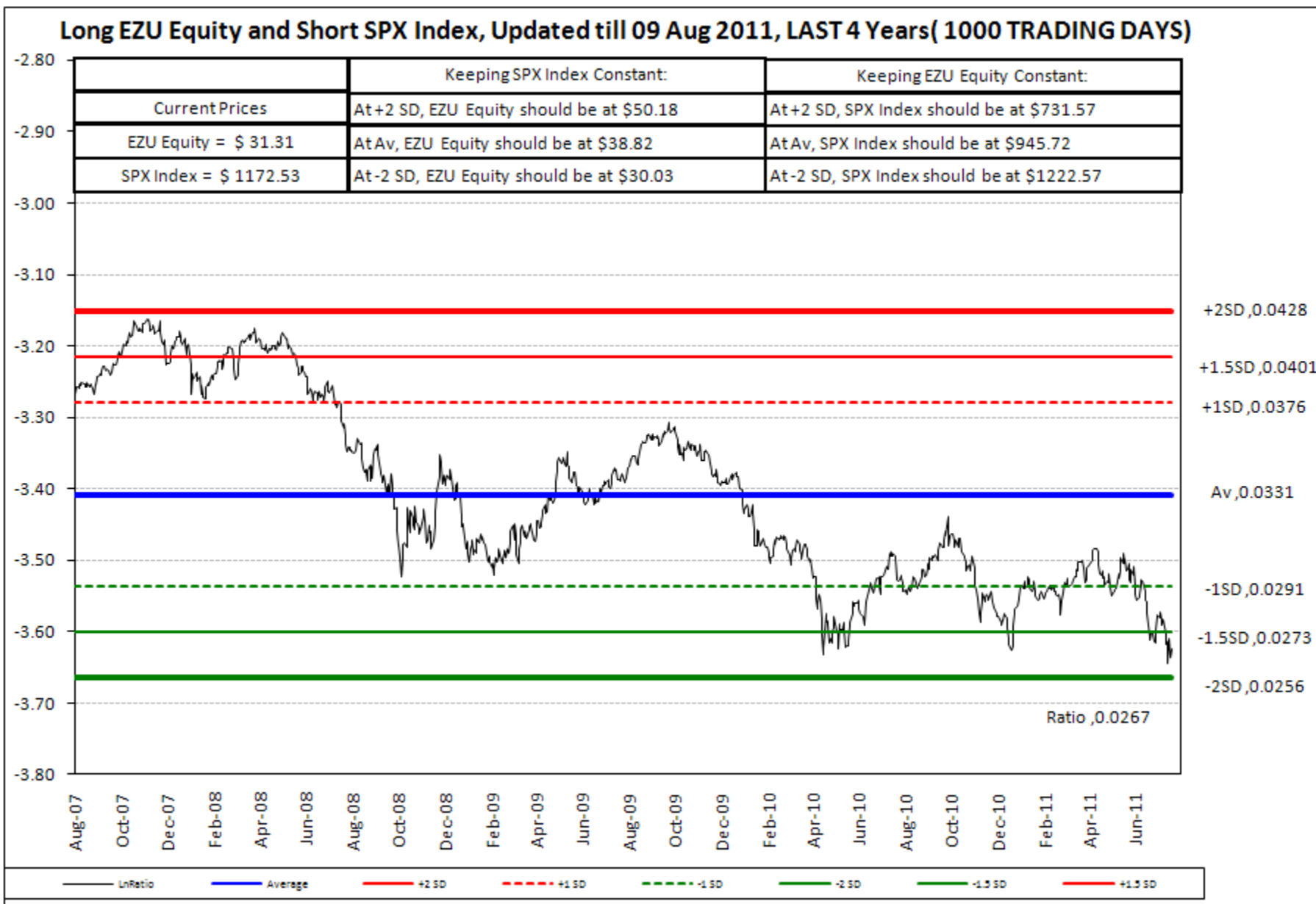
EZU – Daily – 6 Months with RSI, CCI, MACD, Trend line Channel & Fib series- (11D / 55D)



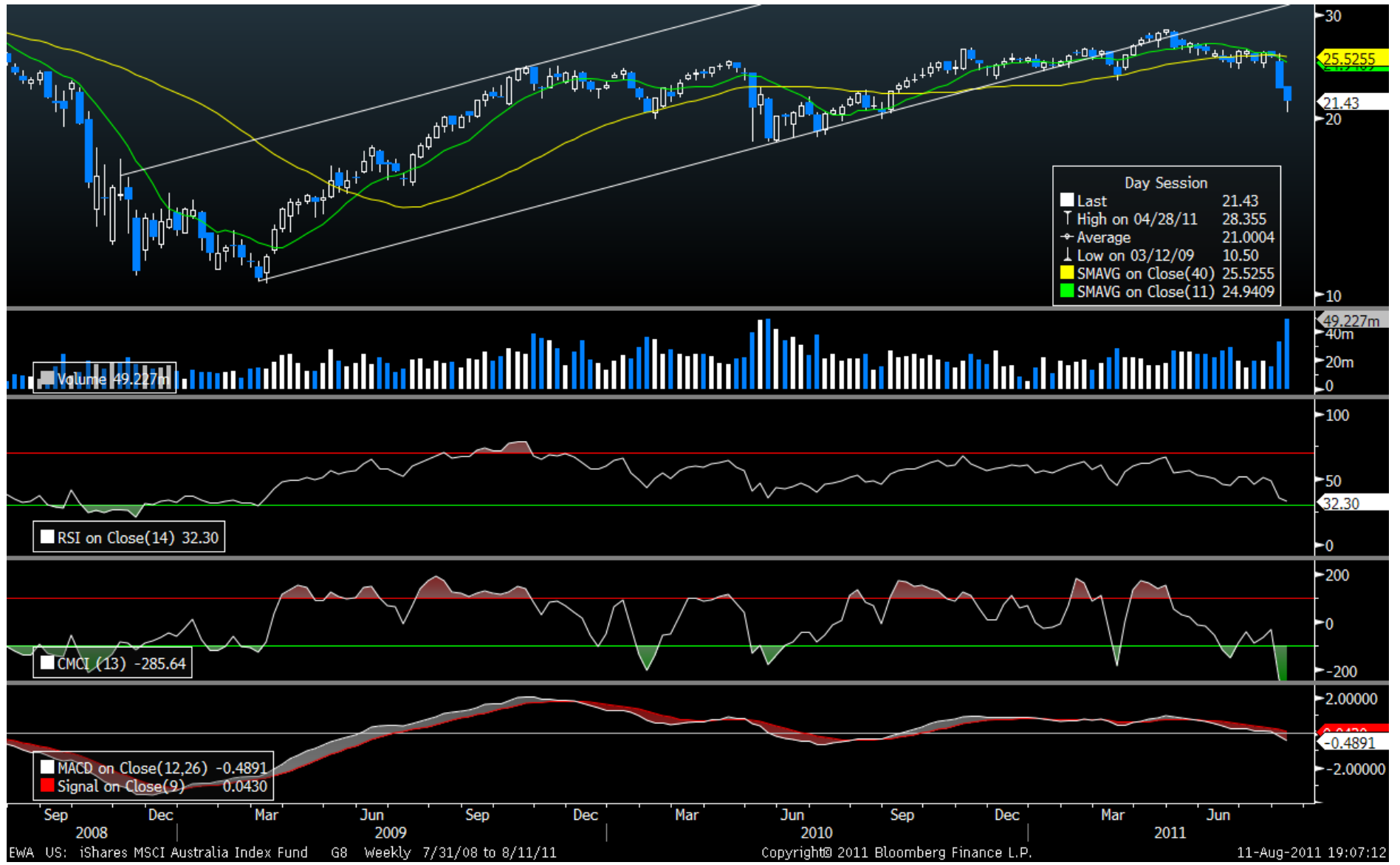
EZU : SPX RATIO - Correlation Ratio Analysis with SPX – 365 days Time basis



EZU Correlation Ratio Analysis with SPX – Full Time basis



EWA - Weekly- 3 Year with RSI, CCI, MACD & Trend line Channel - (11 W / 40 W SMA)

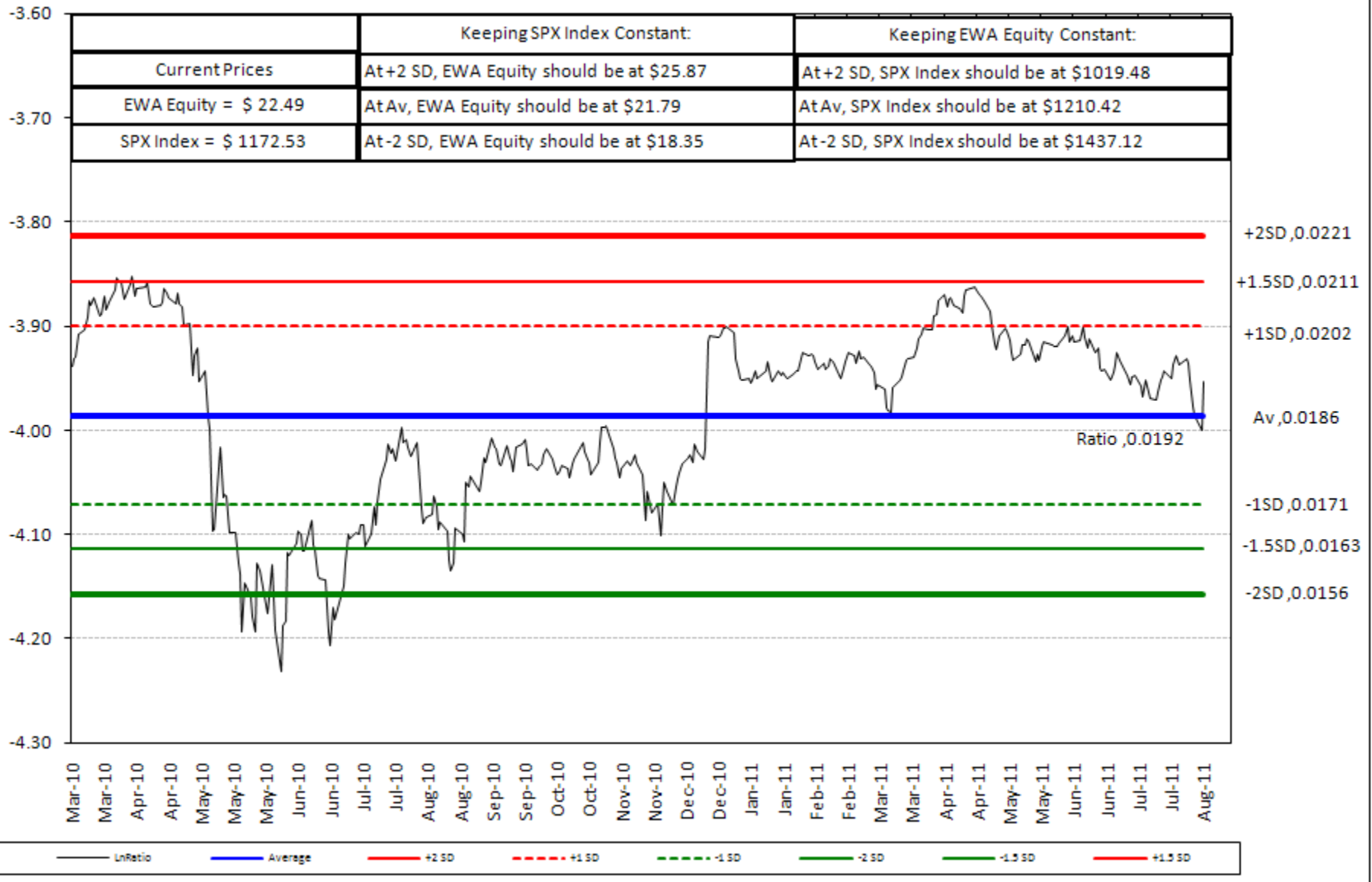


EWA – Daily – 6 Months with RSI, CCI, MACD, Trend line Channel & Fib series - (11D / 55D)



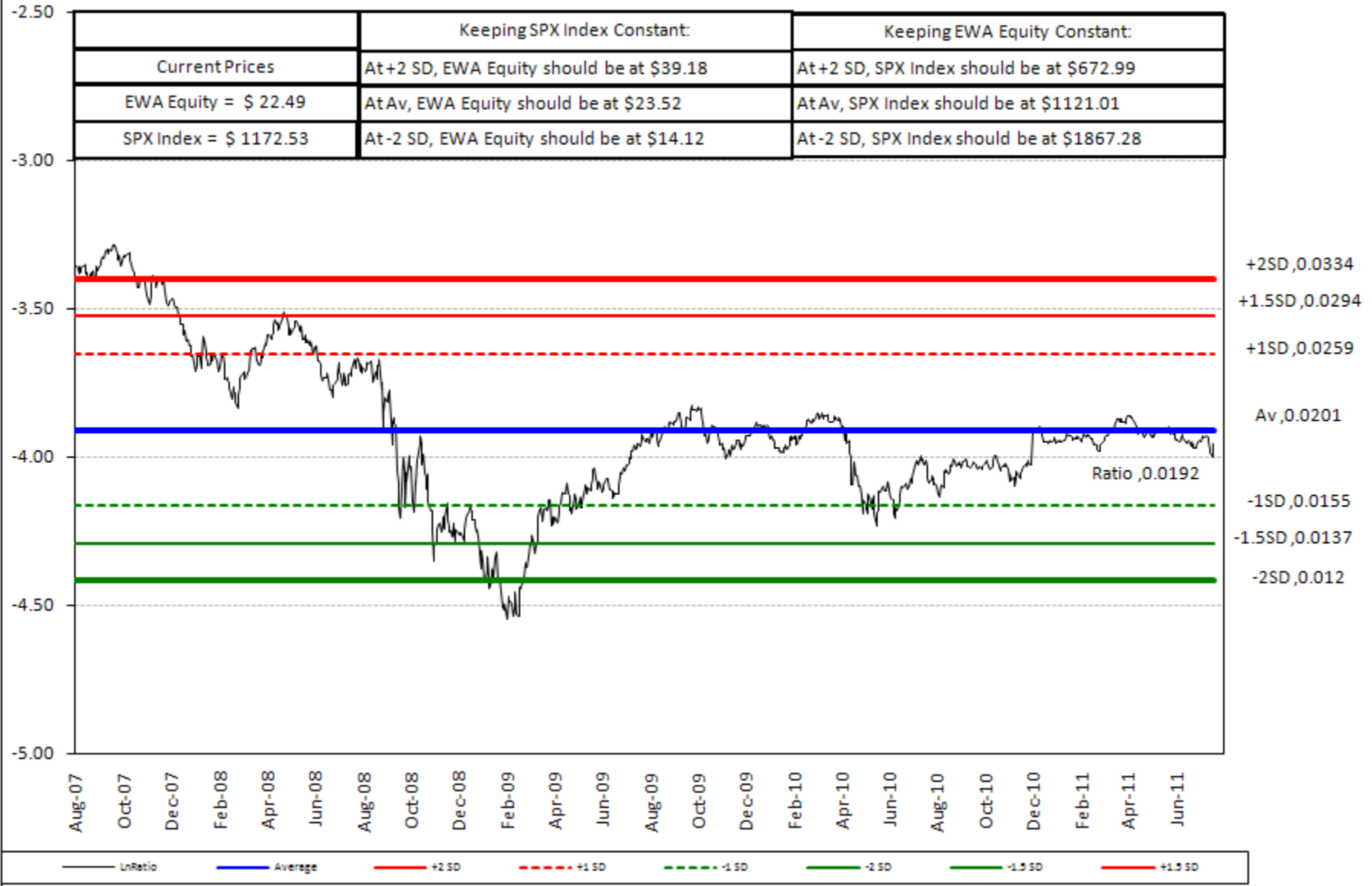
EWA: SPX RATIO - Correlation Ratio Analysis with SPX – 365 days Time basis

Long EWA Equity and Short SPX Index, Updated till 09 Aug 2011, LAST 365 TRADING DAYS ANALYSIS

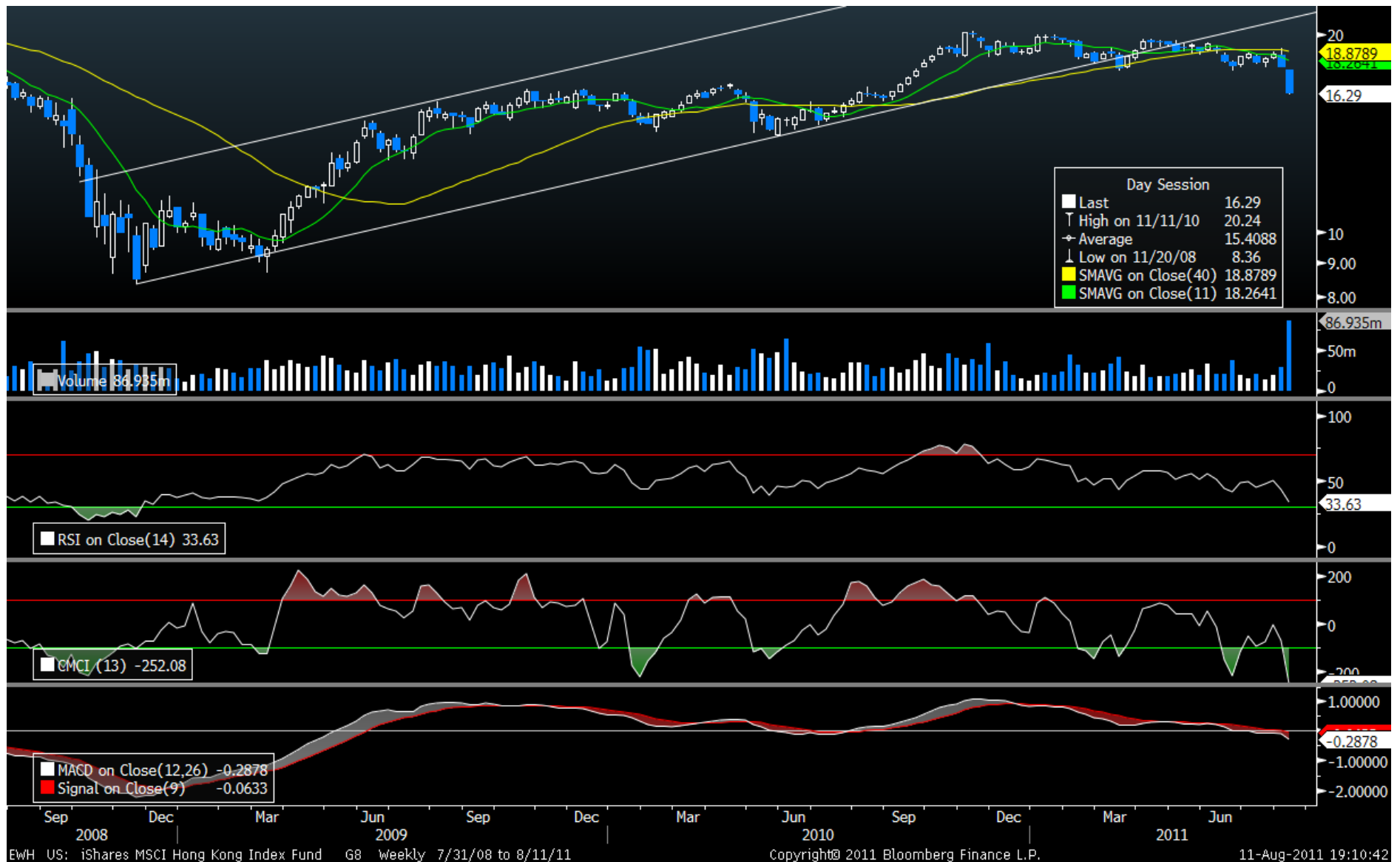


EWA Correlation Ratio Analysis with SPX – Full Time basis

Long EWA Equity and Short SPX Index, Updated till 09 Aug 2011, LAST 4 Years(1000 TRADING DAYS)



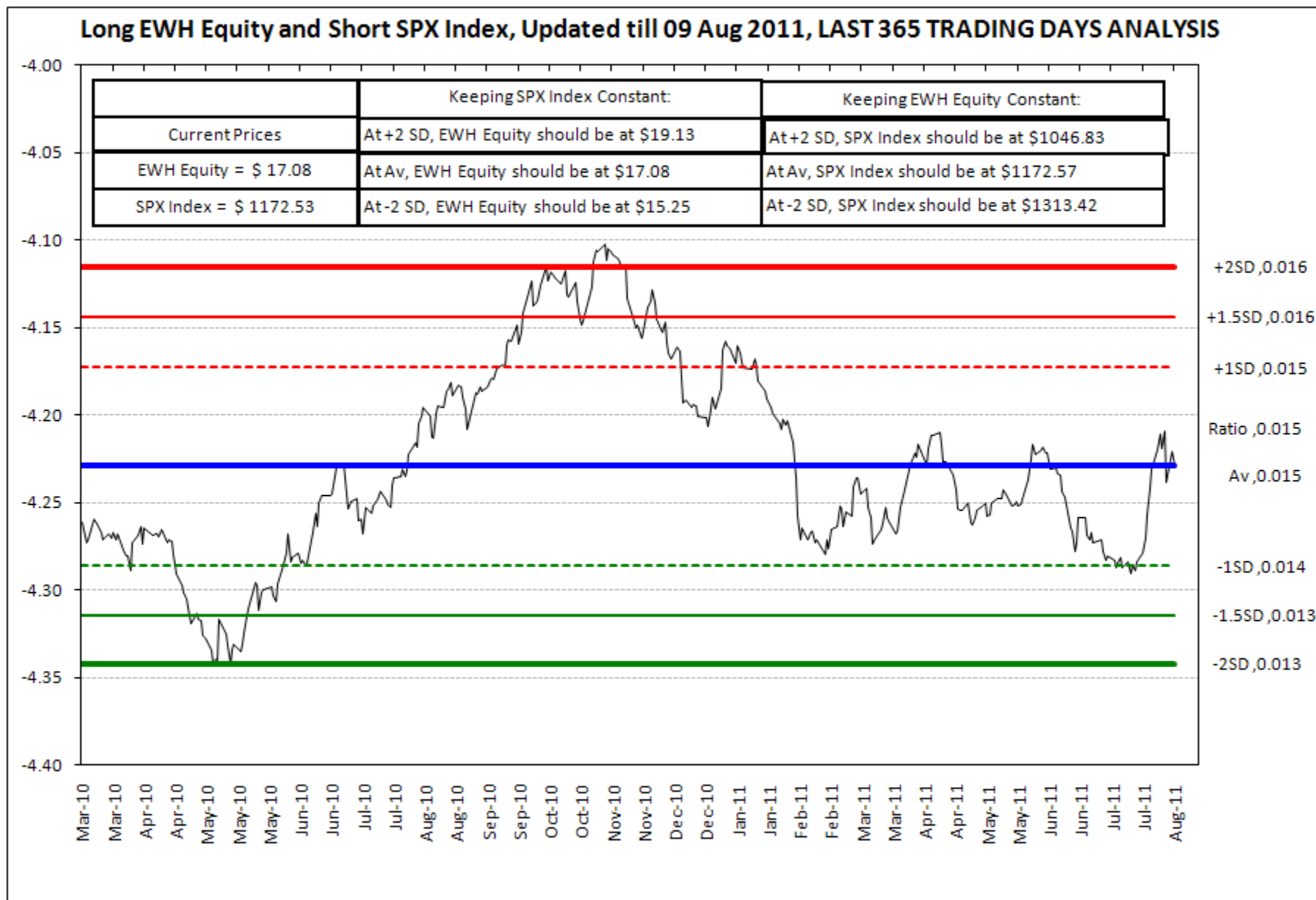
EWH - Weekly- 3 Year with RSI, CCI, MACD & Trend line Channel - (11 W / 40 W SMA)



EWH – Daily – 6 Months with RSI, CCI, MACD, Trend line Channel & Fib Series- (11D / 55D)

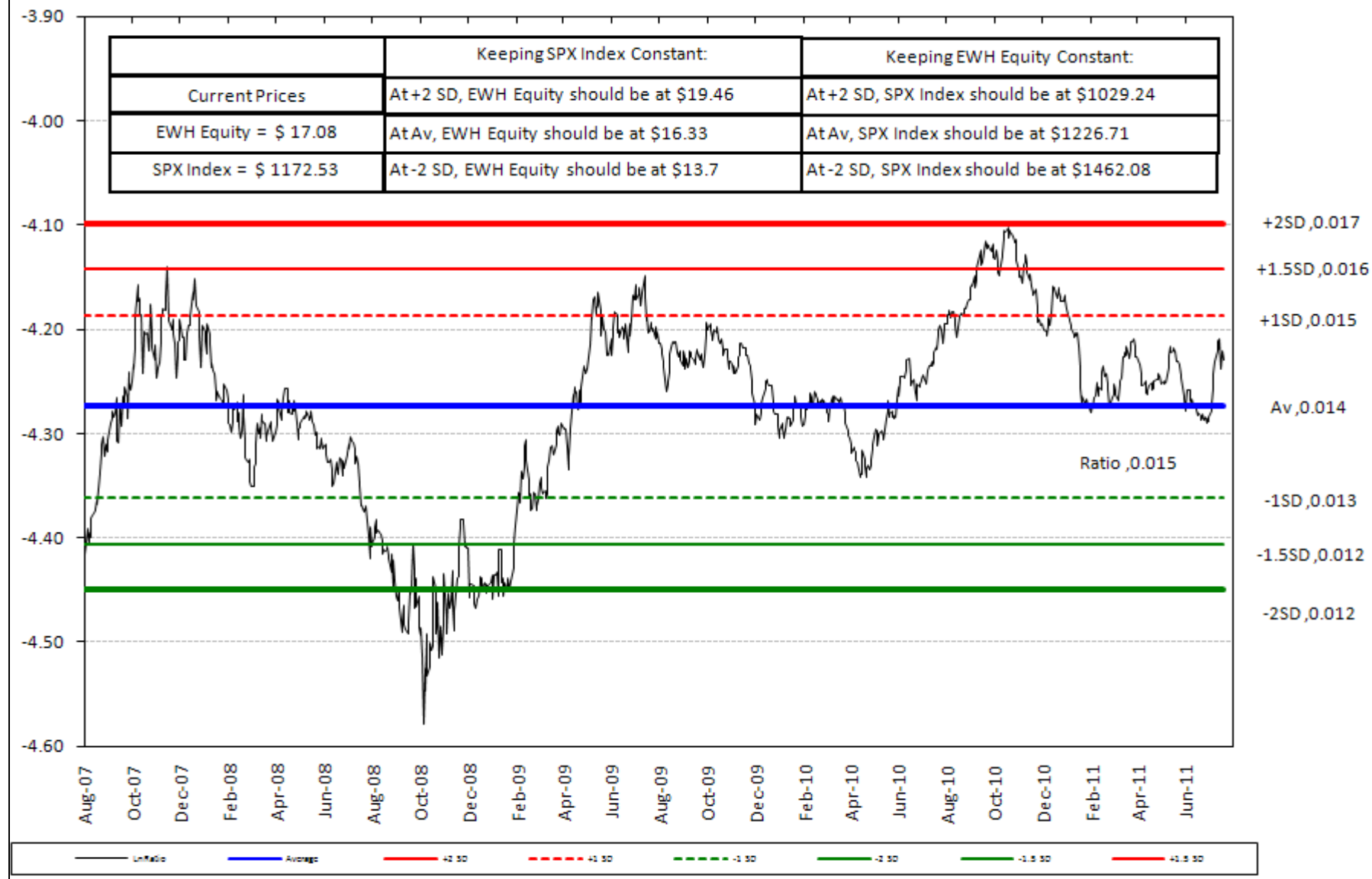


EWH : SPX RATIO - Correlation Ratio Analysis with SPX – 365 days Time basis



EWH Correlation Ratio Analysis with SPX – Full Time basis

Long EWH Equity and Short SPX Index, Updated till 09 Aug 2011, LAST 1000 TRADING DAYS ANALYSIS



Disclaimer : The information in this report has been taken from sources believed to be reliable but SG Capital Research does not warrant its accuracy or completeness. Any opinions expressed herein reflect our judgment at this date and are subject to change. This document is for private circulation and for general information only. It is not intended as an offer or solicitation with respect to the purchase or sale of any security or as personalized investment advice. SG Capital Research or its Author does not assume any liability for any loss which may result from the reliance by any person or persons upon any such information or opinions. These views are given without responsibility on the part of SG Capital Research or its officials. No part of this report may be reproduced in any manner as Author reserves the distribution rights. Under Copyright 2002 Act: It is a violation of federal copyright and imposes liability for such infringement.