



SG Capital Research

Global Market Insights

Research Note – Currency Analysis (B) – STRATEGY & PROP ANALYSIS

MAEG- CURRENCY ANALYSIS- PEC- SG 2011 # MAY_31

For Immediate Release – *Bi Wkly Tuesday AM (EST)*

By: Suneil R Pavse

Contact: apavse@aol.com

Currency Analysis (B)

- DXY
- EUR/USD
- GBP/USD
- JPY/USD
- AUD/USD
- CHF /USD

- Attached, the Chart list & specific Charts (below). *We have selected charts that has some distinct characteristics:*
- Selected Currency have up to (3) Analytic Charts as Titled below
 1. MA / PATTERN/ OSCILLATOR Analysis
 2. Poly Trend Analysis (If Applicable)
 3. PEC Analysis. (If Applicable)
 4. Sentiments (if Extreme character)
- Appendix - **OBJECTIVE , HISTORY** of past Signals & **POM Key Criteria**

- Currency – “ Signals & Projections”

- Trading & Investment Conclusions (update)

(2) Groups of Currencies below - (Refer to the Charts for CZ & PEC -D for ACTIONABLE AREAS)-
(within +/- 1.5% variation) with stops around CZ- Confluence Zone for risk management

- Our Long term view is stated as below but we advise risk management within Short term moves around CZ to CZ with stops

- GR – (1) – DXY, EURO & GBP -

1. DXY – Triggered PEC D @ 77.5, Mid term upside Target at 86

2. EUR/USD – Triggered PEC D @ 1.45, Mid term downside Target at 1.36

3. BGP/USD – Triggered. PEC D @ 1.63 but no downside target yet.

- GR – (2) - AUD, CHF & JPY –

1. JPY/USD - Triggered PEC D @ 82 Mid term Target to 88

AUD/USD - Triggered. PEC D @ 1.09 but no downside target yet

. CHF / USD – Trigger PEC D @ 88 – but no upside target yet .

2 – DXY Analysis – Poly trend

This crowded trade could take quite a while to unwind — into 2014. Bigger picture - the Poly Trend has changed inversely to upside.



2 - USD – MA / Pattern & Oscillator Analysis

The Dollar Index continues to base and has been bolstered by the continuing, unresolved crisis in Europe. Earlier USD went into panic lows came back in quickly with Oversold on our Oscillator indicator and Sentiments were are very bearish. **Stop below 72.5 for risks management**



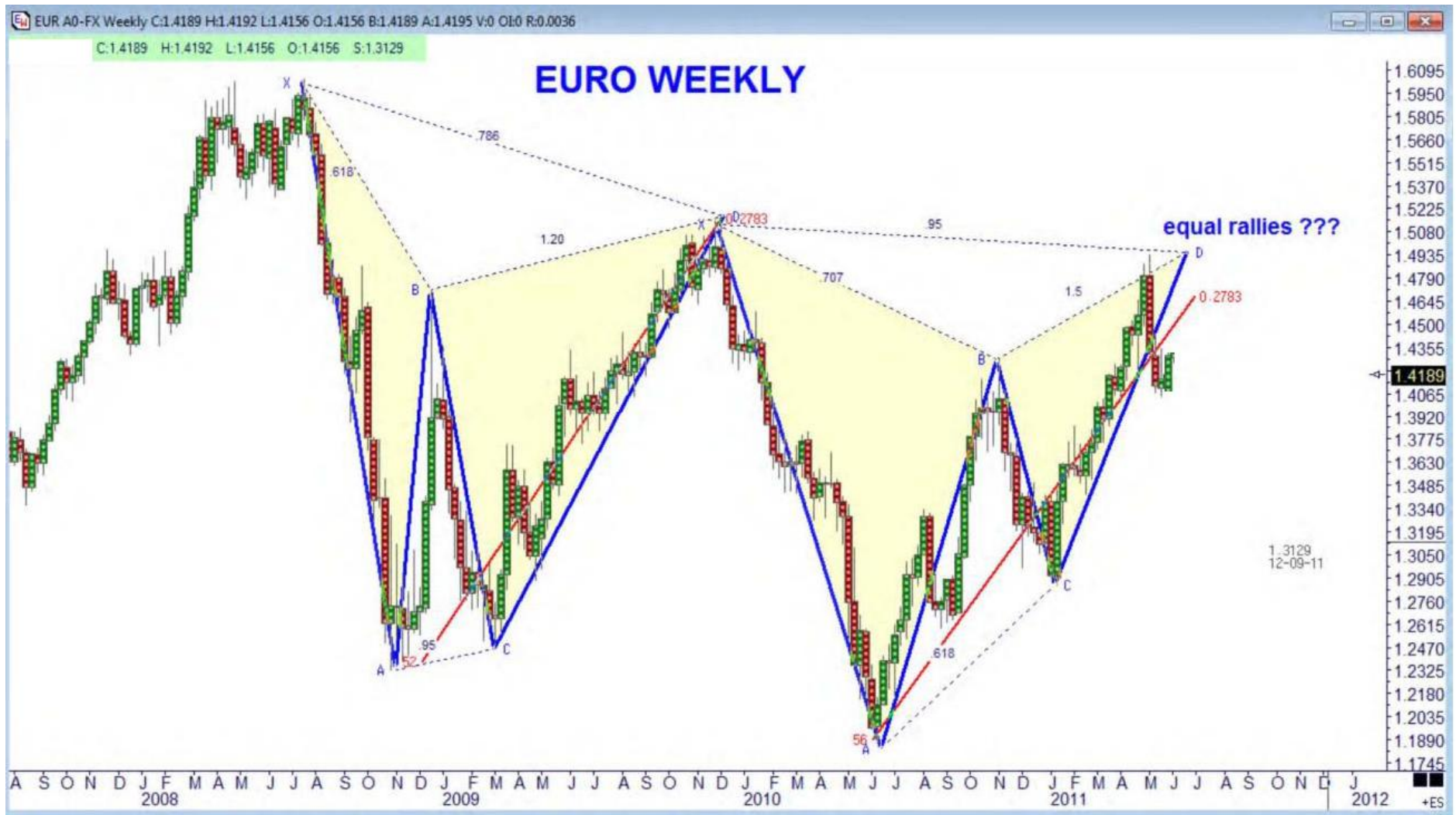
EURO – Poly Trend Analysis

We would not be surprised to see the last high retested before move down. Our first target 1.37 from our Trigger point as indicated in red in chart below.



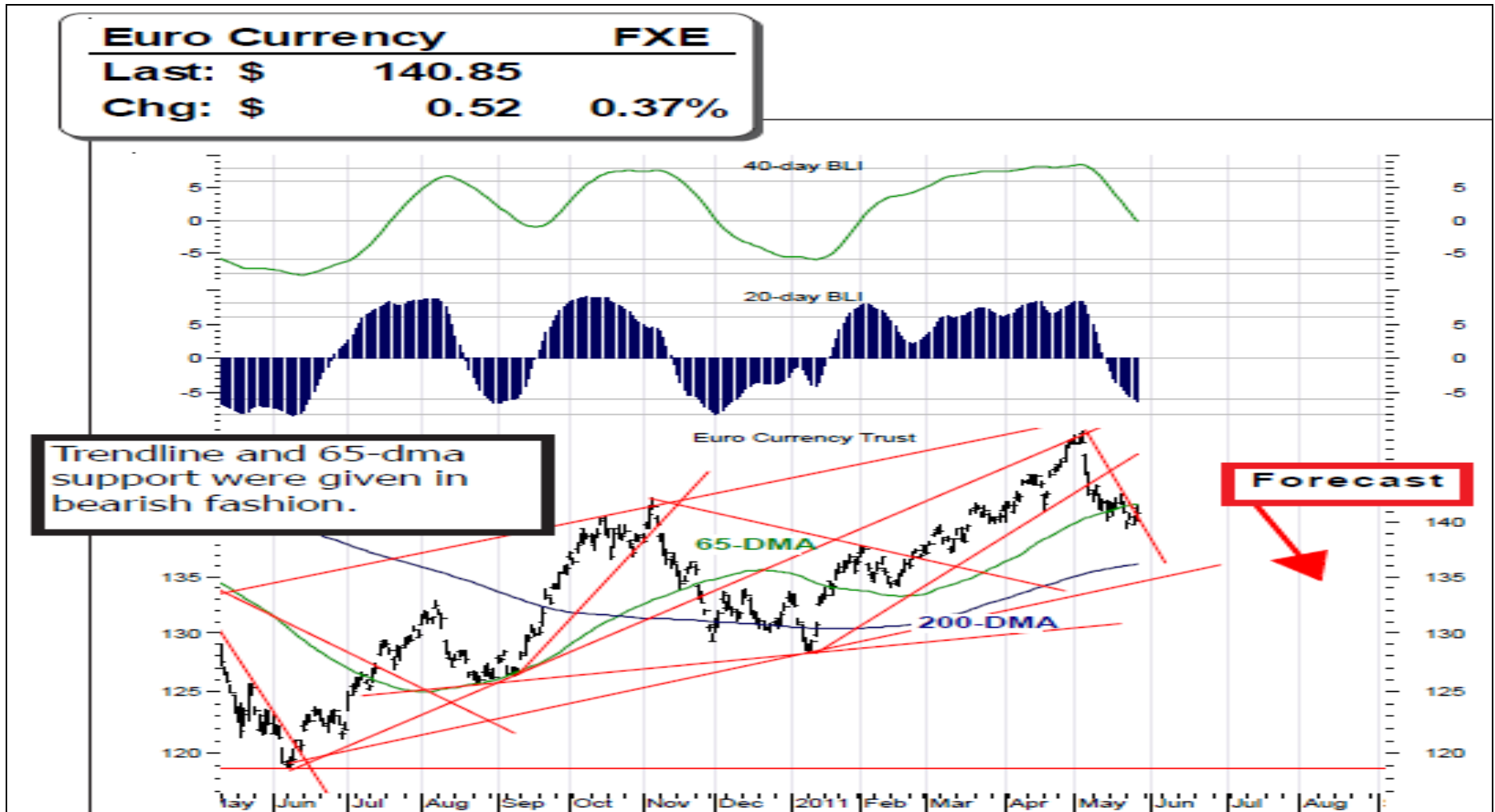
3 - EURO / USD – PEC Analysis - Intermediate term

By PEC D Method, 1.45, This market also extended as well to 1.49 . Hence stops gets to be handy. **Stop above 1.49, for risks management**



3 - EURO / USD – MA / Pattern & Oscillator Analysis

Once Signs of weakness is in place and Trend line is broken, Traders will start shorting the bounces from now on .
Especially PEC D is in place at 1.49 for top side risk management. **Stop above 1.49, for risks management**



3 - GBP / USD – PEC Analysis - Intermediate term

GBP -USD Our PEC -D @ 618 comes in at 1.63 correctly, stops above 1.67 for risks management

WE LOST OUR DATA DURING THIS CURRENT VERIZON INTERNET PROBLEMS LAST 2 DAYS

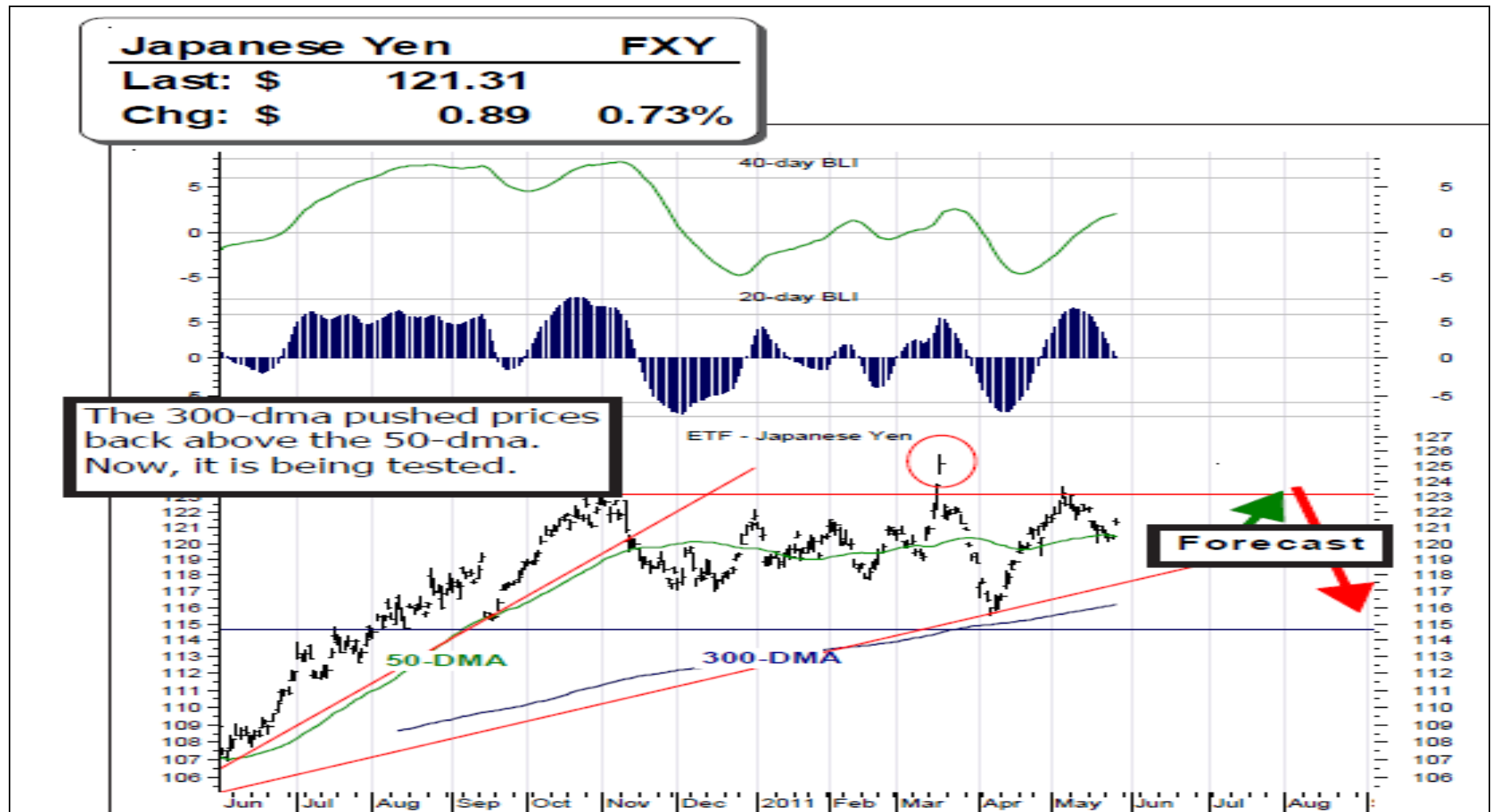
YEN / USD - PEC Analysis

*Consolidation after Hugh swing move . **Stops below the lows 76 for risks management** . we doubt if it will get that low .
Capitulation / Climax lows do not have to get tested*

***WE LOST OUR DATA DURING THIS CURRENT VERIZON INTERNET
PROBLEMS LAST 2 DAYS***

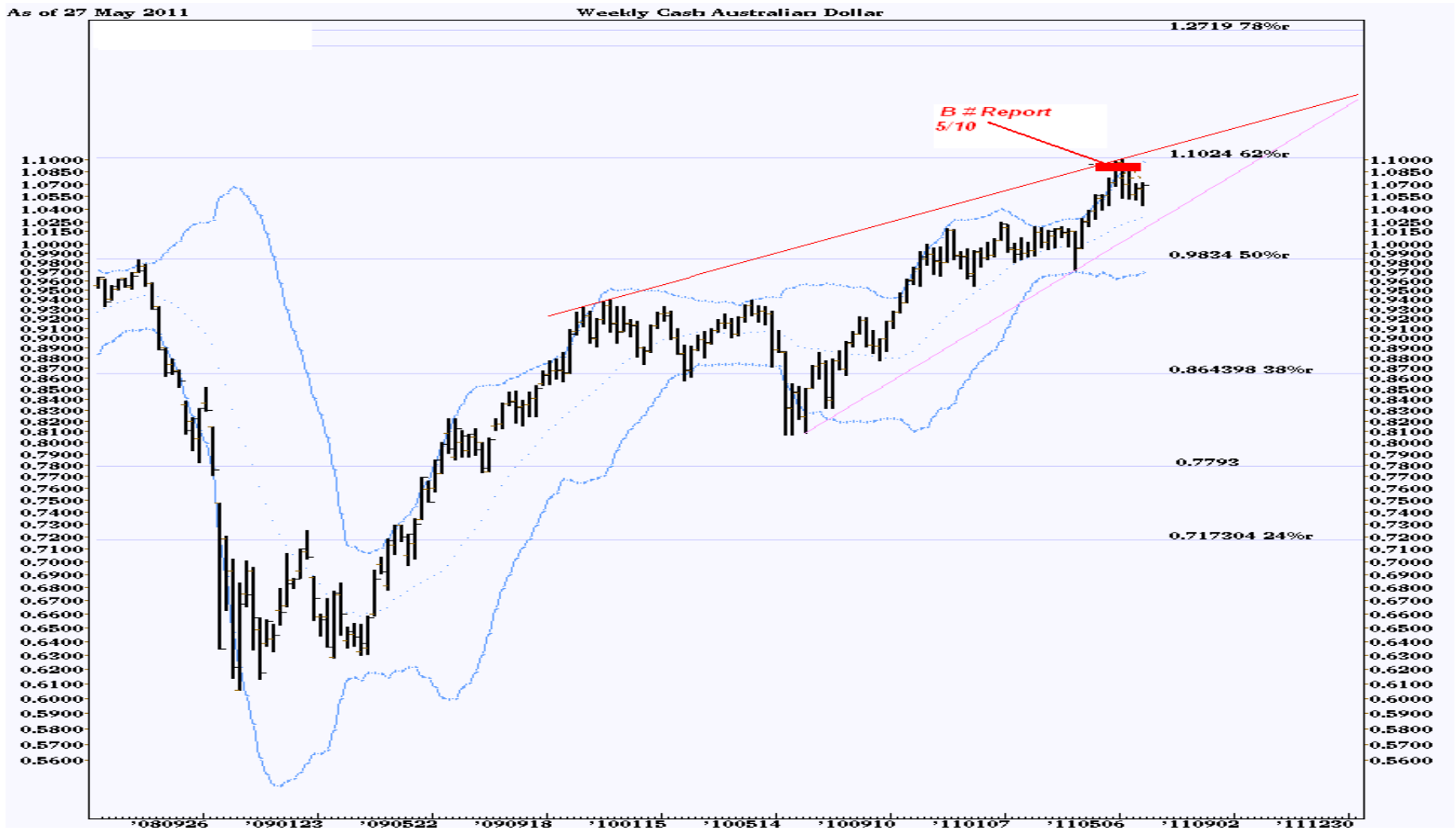
YEN / USD - MA / Pattern & Oscillator Analysis

USD/JPY's , -“ A counter trend move appears to be complete after massive decline upside Risks protection above Island top



3 - AUD / USD -Analysis

AUD - could retest the last high. However, the pattern of a rising wedge implies that a waterfall decline is coming and a break of the support line. our Trigger point 1.07 as indicated in red in chart below.



AUD/USD - PEC Analysis

PEC D signal @ 1.09 is more valid analysis to judge , stops above 1.11 for risks management



CHF / USD - PEC Analysis

A Bullish reversal at PEC D -88 Triggered. stops below 85 for risks management

WE LOST OUR DATA DURING THIS CURRENT VERIZON INTERNET PROBLEMS LAST 2 DAYS

Appendix

- Objective

*Focus is on the short term and Intermediate term turning points of the Currencies via Integrated Methodologies of POM's and PEC's overlay. It utilizes multiple input signal from PEC derived with ABCD Price projections, where D price point to be validated via Price Oscillation Model (POM) . POM's price & Quality volumes (PQV) , patterns conclusions is derived to overlay POM /PEC gives a Confluence Price Zone "around D Zone" (**within +/- 1.5% variation**). This is ACTIONABLE ZONE, on scaled in entry with stops if required on other side of confluence) with margin for volatility & Risk tolerance. This is supplementary Analytics to add value to RA/ RI Framework for Risk Management.*

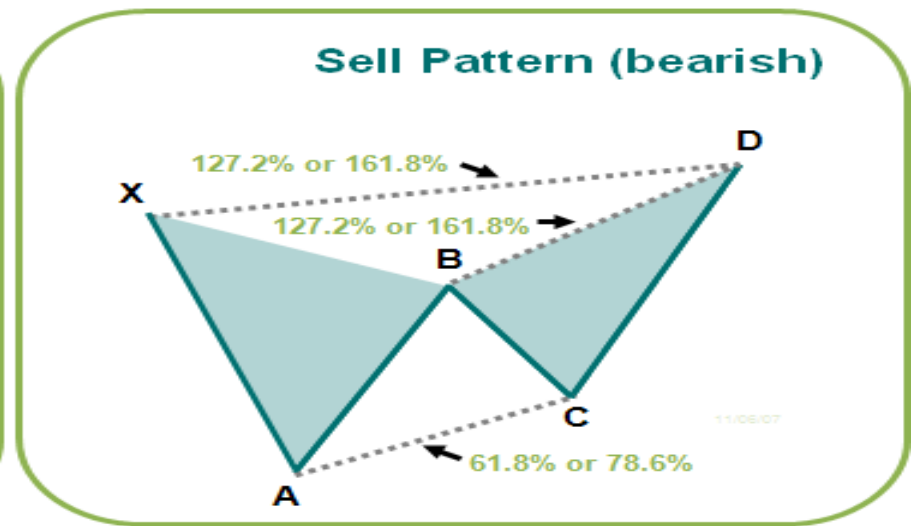
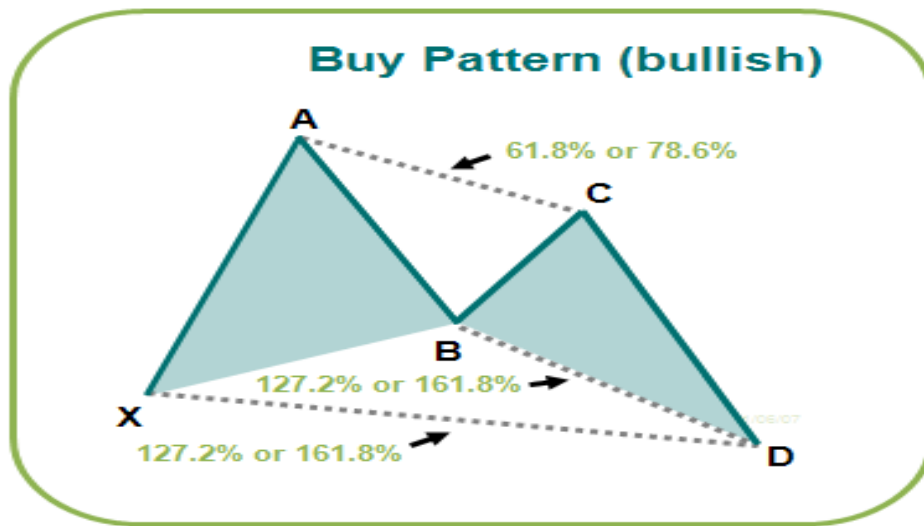
(In Some Charts, there may be possibility of 1- 2 days of delayed chart data due to accommodation of processing and preparation time in 1-2 days prior

Pythagoras Expansion / Contraction – (PEC) Model

- PEC Model is a 2th Derivative Timing Tool utilized on core currencies which identifies the turning point, for Tops and Bottoms on “Short & Intermediate term” Trend in the currency market.
- Methodology is based on Mathematical Pattern Recognition with Symmetrical Pythagoras Triangular expansion and contraction (PEC) in concert with Price Oscillation (POM) . This has a high probability for greater accuracy on Price projections at confluence when Integrated together.
- Once our POM analysis is complete, it will overlay PEC. The input signals are from tracking rolling Arithmetic Numerical series of Regression utilizing Fibonacci to Identify Triangular patterns of Expansion / Contraction. Triangular pattern completes at the convergence of 2 separate Fibonacci extension levels and overlay Price Oscillation Model.
- Since the Currency has 2 dimensional pairs, PEC is critical to analyze with 2x2 Fibonacci streams to achieve confluence point D coinciding with POM

PYTHAGORAS EXPANSION / CONTRACTION –(PEC) Model

The output signal of ABCD price moves preceded by a swing high or low (XA) generates projection point D, which is actionable point derived from 2 connecting triangles with convergence ratio. As with all geometric patterns, a Buy or Sell signal occurs as the pattern completes at point D



Daily SPX - “ Trend Adjusted Signal”

- 3x3 /9EMA – Break Indicator –

The process utilizes the cumulative Algorithm of price trails 3x3 / 9EMA input signals for Trend formation. This signal tends to work well in Market extensions (i.e. Post POM 14).

This Methodology is implemented by Program Traders especially in Momentum extensions and diagonal triangle formation Trend-following system which bases its reversal signals on breaking a significant closing Break Indicator I to confirm the new trend. (it's important to use a stop if you act on a signal). The reversal price is generated on the close of a bar. (The drawback of strategy is that it can whip saw).

INTERNALS OF 3X3- 9EMA – Break Indicator.

The line break indicator has captured the post POM 14 Moves on a mechanical basis. Although can't guarantee it will continue. But, even if it misses on occasion , it's still is the best indicator we've ever seen in Market for extensions.

Tight trading ranges tend to cause whipsaws and those are environments where trading multiple markets can help for diversification, in SPX & DOW. The reason is that we have a purely mechanical indicator, our line break indicator, that is much better to use. That indicator has proven extremely good over the past several months in many markets in many extensions.

As a reminder of how simple this indicator is, when the market closes above the "break" price level, the indicator is ""bullish"; when the market closes below the break price, the indicator is then "bearish". at the close

Disclaimer : The information in this report has been taken from sources believed to be reliable but SG Capital Research does not warrant its accuracy or completeness. Any opinions expressed herein reflect our judgment at this date and are subject to change. This document is for private circulation and for general information only. It is not intended as an offer or solicitation with respect to the purchase or sale of any security or as personalized investment advice. SG Capital Research or its Author does not assume any liability for any loss which may result from the reliance by any person or persons upon any such information or opinions. These views are given without responsibility on the part of SG Capital Research or its officials. No part of this report may be reproduced in any manner as Author reserves the distribution rights. Under Copyright 2002 Act: It is a violation of federal copyright and imposes liability for such infringement.